



# The Australian gulf snapping turtle *Elseya lavarackorum* (Testudines: Chelidae) revisited—Is the late Pleistocene fossil species extant?

Scott A. Thomson<sup>1,2</sup>, Natália R. Friol<sup>3</sup>, Arthur White<sup>4</sup>, Dion Wedd<sup>5</sup>, Arthur Georges<sup>6</sup>

1 Centro de Estudos dos Quelônios da Amazônia, Petrópolis, Manaus, State of Amazonas, 69055-010, Brasil

2 Research Institute for the Environment and Livelihoods, Charles Darwin University NT 0909 Australia

3 Museu de Zoologia da Universidade de São Paulo, São Paulo, Brazil

4 School of Biological, Earth & Environmental Sciences, University of New South Wales, Sydney NSW 2052, Australia

5 Department of Environment, Parks and Water Security, Northern Territory Government, Palmerston, NT 0831, Australia

6 Institute for Applied Ecology, University of Canberra, Canberra ACT 2601, Australia

<https://zoobank.org/7ADA89E8-5A5A-4CBC-9862-F90073B5A1BA>

Corresponding author: Arthur Georges ([georges@aerg.canberra.edu.au](mailto:georges@aerg.canberra.edu.au))

Academic editor Uwe Fritz

Received 6 January 2023

Accepted 8 March 2023

Published 17 March 2023

**Citation:** Thomson SA, Friol NR, White A, Wedd D, Georges A (2023) The Australian gulf snapping turtle *Elseya lavarackorum* (Testudines: Chelidae) revisited—Is the late Pleistocene fossil species extant? Vertebrate Zoology 73 237–256. <https://doi.org/10.3897/vz.73.e99495>

## Abstract

Disagreement exists on the taxonomic identity of the extant populations of the Australian *Elseya* referred to in 1992 as the gulf *Elseya* (= *Elseya* sp. aff. *dentata* [Nicholson]). The extant form has since 1997 been considered conspecific with the late Pleistocene fossil *Elseya lavarackorum* (White and Archer, 1994). Recently it has been considered a new species, *Elseya oneiros* Joseph-Ouni et al., 2020, conspecific with another fossil found in the same site and stratum as *Elseya lavarackorum*. Here we re-examine the fossil material and reassess the characters used by previous authors in an attempt to decide the issue. We find that the anterior bridge suture with the carapace of the fossil *Elseya lavarackorum* is associated with extensive and prominent plastral elements, which has led to misinterpretation of characters associated with this structure. We furthermore show that interindividual variation in sulci patterns is so great as to render them of little taxonomic value. On the basis of (a) deviation of the anterior shape of the carapace from ovoid such that, in aged individuals, the most anterior point of the carapace occurs at marginal scutes M2 (a resultant nuchal bay occurs in such individuals); (b) the typical absence of a cervical scute; (c) no evidence of a medial constriction in the anterior bridge strut suture; and (d) absence of evidence of any other informative variation of taxonomic value; we conclude that the decision to consider the late Pleistocene (ca 23 kyr old) fossil and the extant *Elseya* sp. aff. *dentata* [Nicholson] as *Elseya lavarackorum* (White and Archer, 1994) as conspecific should stand.

## Keywords

Chelonia, chelid, chronospecies, fossil, Lazarus turtle

## Introduction

In May 1984, exploration of eroded fluvial deposits exposed in the catchment of the Gregory River on Riversleigh Station, north-western Queensland, revealed sev-

eral sites that produced fossil vertebrates. One of these, known as Terrace Site (Davis and Archer 1997), produced abundant remains of chelid turtles, including the

somewhat crushed but nearly complete plastron, partial carapace and partial pelvic remains of a large chelid turtle (UNSW AR14547 = QM F24121, White and Archer 1994). The fossil specimen was diagnosed by the first vertebral scute being much wider than the second; vertebral scutes 2 and 3 being rectangular, longer than wide, with only small projections into the costal scute junctions; a relatively wide intergular scute on the plastron that deeply divides the humeral scutes; a humeral-pectoral seam that is sigmoidal rather than straight; and internal attributes of the girdles and their articulation. White and Archer (1994) noted the absence of the cervical scute and a leading edge of the carapace that does not curve posteriorly until the suture between marginal scute 2 and 3. They compared the attributes of the fossil specimen to those of a range of short-necked Australian chelid taxa for which information was available at the time (*Elseya dentata*, *Emydura krefftii*, *Emydura macquarii*, *Rheodytes leukops*, *Elusor macrurus* and *Pseudemydura umbrina*). White and Archer (1994) noted some of the attributes of the fossil more closely resemble those of the long-necked chelids (*Chelodina*), but on the basis of other characters, assigned the fossil to the genus *Emydura*. They formally described the fossil as *Emydura lavarackorum* in honour of Sue and Jim Lavarack who collected the holotype.

Thomson et al. (1997) re-evaluated the fossil *Emydura lavarackorum* in the context of additional information and a broader representation of extant Australian chelid turtles. They more tightly defined the character states associated with the anterior bridge suture with the carapace. On the basis of this character (distinctly different in the fossil from that of *Emydura*), the width of vertebral scute 1 relative to that of vertebrals 2 and 3, and the absence of a cervical scute (absent only as a rare variant in *Emydura*), they reassigned *Emydura lavarackorum* to the genus *Elseya*. This reassignment has been widely accepted (Cogger 2018).

Referring to the recessed nuchal region, Thomson et al. (1997) assigned *Elseya lavarackorum* to the subgenus *Pelocomastes*. This character state has been variously described as: “the leading edge of the carapace is almost straight and does not curve posteriorly until the suture line between the second and third marginal scutes” (White and Archer 1994); “an indentation of the carapace margin in the area of the cervical cleft and first marginal scutes” (Thomson et al. 1997); “anterior carapace expanded, anterior extent of second marginal scute as great or greater than that of first marginal scute in adults” (Georges and Thomson 2010); or nuchal emargination (Joseph-Ouni et al. 2022). This character state is not observed in *Elseya* (*Elseya*) and is ontogenetically variable in *Elseya* (*Pelocomastes*) becoming evident in only the largest, presumably oldest, specimens.

Thomson et al. (1997) went further in assigning extant populations of an undescribed form of *Elseya* in the Gregory-Nicholson drainage to the fossil holotype. Genetic analyses had established the gulf snapping turtle (*Elseya* sp. aff. *dentata* [Nicholson]) as a distinct species with affinities to the Queensland clade of *Elseya* (Georges and Adams 1992, 1996) (now *E. lavarackorum*, *E. irwini*, *E.*

*albagula*, subgenus *Pelocomastes*). Thomson et al. (1997) concluded from the size of the fossil specimen and its strongly embossed, rounded peripheral bones in the region adjacent to the bridge, that the fossil represented an aged individual. This is an important consideration in making comparisons with other material, because of the substantial ontogenetic variation in many diagnostic characters. Taking this into consideration, the observation that the fossil specimen did not differ in any substantial character states from the extant populations of the Gregory-Nicholson drainage and the young age of the fossil (est. late Pleistocene, ca 23,900 years BP, Davis and Archer 1997), led Thomson et al. (1997) to assign the extant populations to *Elseya lavarackorum* (White and Archer, 1994).

In a recent paper, Joseph-Ouni et al. (2022) revisited the assignment of *Elseya lavarackorum* to the Queensland clade of *Elseya* (subgenus *Pelocomastes*). They also revisited the proposition of Thomson et al. (1997) that the fossil and extant *Elseya* sp. (aff. *dentata* [Nicholson]) = *Elseya lavarackorum* sensu Thomson et al. 1997) belonged to the same chronospecies. In challenging both propositions, Joseph-Ouni et al. (2022) drew upon and strengthened an analysis presented earlier by Joseph-Ouni et al. (2020) in a publication promulgated outside the normal channels of scientific discourse (via The Turtle and Tortoise Preservation Group, <https://www.ttpg.org>, last accessed 31-Dec-22). They instead argued that the chelid turtle fossils found in the deposit with *Elseya lavarackorum* represent two species, *Elseya* (*Elseya*) *lavarackorum* (White and Archer, 1994) and *Elseya* (*Pelocomastes*) *oneiros* Joseph-Ouni et al., 2020, the former extinct and the latter comprising a new chronospecies that includes the extant form *Elseya* sp. aff. *dentata* [Nicholson].

Characterization of morphological variation in the shells of extant *Elseya* can provide a baseline for interpretation of the character states of fossil specimens. However, other studies of this type serve to highlight the difficulties inherent in recognizing and accommodating intraspecific diversity in the fossil record (Vitek 2018; Guerrero and Pérez-García 2021; Joyce et al. 2022; Liaw and Tsai 2022). This challenge becomes particularly acute when relatively few fossil specimens are available. Differences between the sexes where the sexes are often unidentified in fossil material, and ontogenetic variation whereby large specimens in the fossil record represent an extension of the allometric trajectory present in available extant specimens, present particular difficulties for interpretation. Conspecificity of young fossils and extant populations is equally challenging to establish or refute, but it is not particularly uncommon to find reference to late Pleistocene fossils considered to be also represented by extant populations of the same species (Guilday et al. 1978; Willis 1990; Archer et al. 2019; Liaw and Tsai 2022). The question is one of whether the young fossil and the extant populations are on the same evolutionary trajectory, requiring phylogenetic judgement, and if they are, whether the fossil and extant forms show sufficient morphological divergence as to be considered separate chronospecies, which requires a subjective judgement (Dzik 1990; Futuyma 2005).

In this paper, we confirm that the affinities of *Elseya lavarackorum* lie with the subgenus *Pelocomastes*, not with the subgenus *Elseya* (Joseph-Ouni et al. 2020, 2022). We question the taxonomic value of characters used by Joseph-Ouni et al. and argue that the evidence they present is not sufficient to establish that *Elseya lavarackorum* (represented by the focal fossil) and *Elseya oneiros* (represented by a fossil from the same Riversleigh Terrace Site stratum) are distinct evolutionary species (separate and diagnosable lineages – sensu Futuyma 2005). We further argue that the evidence and argument presented by Joseph-Ouni et al. (2022) is not sufficient to establish that the extant *Elseya* sp. aff. *dentata* [Nicholson] and the young fossil *Elseya lavarackorum* (approx. 23.9 Ka BP) are distinct enough to refute the hypothesis of their both being the same species (i.e. chronospecies, sensu Dzik 1983, 1990). We conclude that the name *Elseya lavarackorum* (White and Archer, 1994) should stand for the extant gulf snapping turtle.

## Methods

### Specimens examined

We examined the fossil holotype (QM F24121) for *Elseya lavarackorum* (White and Archer, 1994) catalogued and housed at the University of New South Wales, which comprised a partial carapace (Fig. 1), a partial but near complete plastron (Fig. 2) and several isolated fragments that have not been assembled; an additional fossil partial plastron (QMF30817) (Fig. 3) from the same strata at the Riversleigh Terrace Site referred to *Elseya lavarackorum* by Thomson et al. (1997) by association; and a third near complete fossil plastron (QMF30818) (Fig. 4) also from the same strata at the Riversleigh Terrace Site referred to *Elseya lavarackorum* by Thomson et al. (1997) by association and to *Elseya oneiros* by Joseph-Ouni et al. (2022). Note that specimens QM F24121, QM F30817 and QM F30818 have been accessioned and catalogued by the Queensland Museum but not yet housed there. Instead, they have been catalogued and housed by the University of New South Wales (UNSW), where they were viewed by us. The fossil holotype (QM F24121) is catalogued with UNSW as AR14547; QM F30817 and QM F30818 are catalogued with UNSW as QMF30817 and QMF30818 respectively. The fossil material will ultimately come to be housed at the Queensland Museum. To avoid confusion and to reflect current holdings, we hereafter refer to the fossils as UNSW QMF24121 (the holotype), QMF30817 and QMF30818. A full list of specimens examined is provided in Appendix 1.

We also examined high quality photographs of extant specimens provided to us by the co-authors of Joseph-Ouni et al. (2022) and others (Supplementary Materials) to assess interindividual variability in characters based on scutellation, where relevant.

## Phylogenetic Analysis

A total of 106 characters scored for 24 taxa were used for phylogenetic analysis using Maximum Parsimony as implemented in PAUP Version 4.0a (build 169) for 32-bit Microsoft Windows (built on Feb 10 2021 at 22: 12: 44). A heuristic search was undertaken, with MAXTREES set to 40,000. A consensus of 10,236 equally parsimonious trees (length 153) was obtained using Majority Rule (> 0.5), and consensus for nodes is indicated on the Fig. 8 and Fig. S1. Bootstrap support values were based on 1,000 replicates, again obtained using PAUP (Supplementary Material 3), and indicated on Fig. 8 and Fig. S1. Synapomorphies were obtained using TNT 1.5 (Goloboff et al. 2008) and added to the tree in Fig. S1. All characters were unordered, of equal weight, and the tree-bisection-reconnection (TBR) branch swapping algorithm was used. Fossils were included as independent taxa. Fossils were coded only on those characters present on the type specimen regardless of other existing material, as recommended by Parham et al. (2015). *Podocnemis sextuberculata* was used as the outgroup. The data matrix of characters by taxa is available in Table S1.

## Results

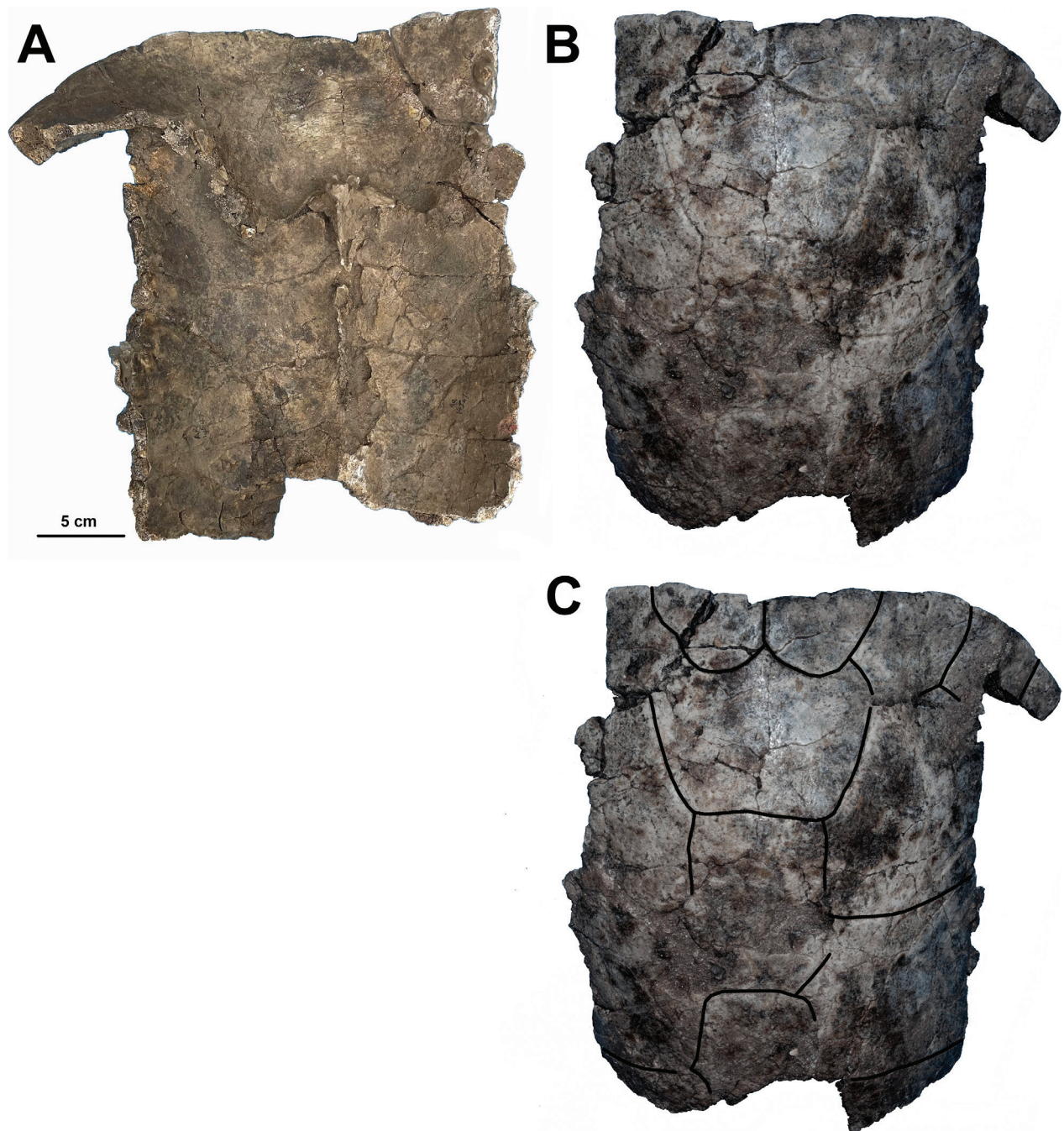
### Character Analysis

Shell terminology follows that of Zangerl (1969) with the exception of our reference to costal scutes and pleural bones (following Pritchard and Trebbau 1984). Terminology of the elements of the shell associated with the bridge follows that of Thomson et al. (1997) and Thomson and Mackness (1999). For consistency with this earlier work to which we continually reference, we refer to the anterior bridge strut which is also referred to as the axillary buttress or the axillary hyoplastral buttress (Joseph-Ouni et al. 2022). Strictly, the anterior bridge strut is a structural complex comprising the axillary buttress of the plastron, the associated pleural bones and peripherals of the carapace, and associated sutures (Thomson et al. 1997). It is a key structural element that affords stability to the shell and most developed in river turtles. We pay particular attention to the position and shape of the suture of the anterior bridge strut with the internal face of the carapace – hereafter the bridge strut suture. Analysis of available characters relevant to the assignment of the fossil chelid turtles of the late Pleistocene Terrace Site fossils at Riversleigh has been undertaken by the original authors White and Archer (1994) and subsequently by Scott Thomson and his co-authors (Thomson et al. 1997; Thomson 2000; Thomson et al. 2015; Thomson and Georges 2009, 2016).

### Bridge strut suture

The Anterior Bridge Strut Suture, or axillary hyoplastral buttress suture of Joseph-Ouni et al. 2022, is a charac-



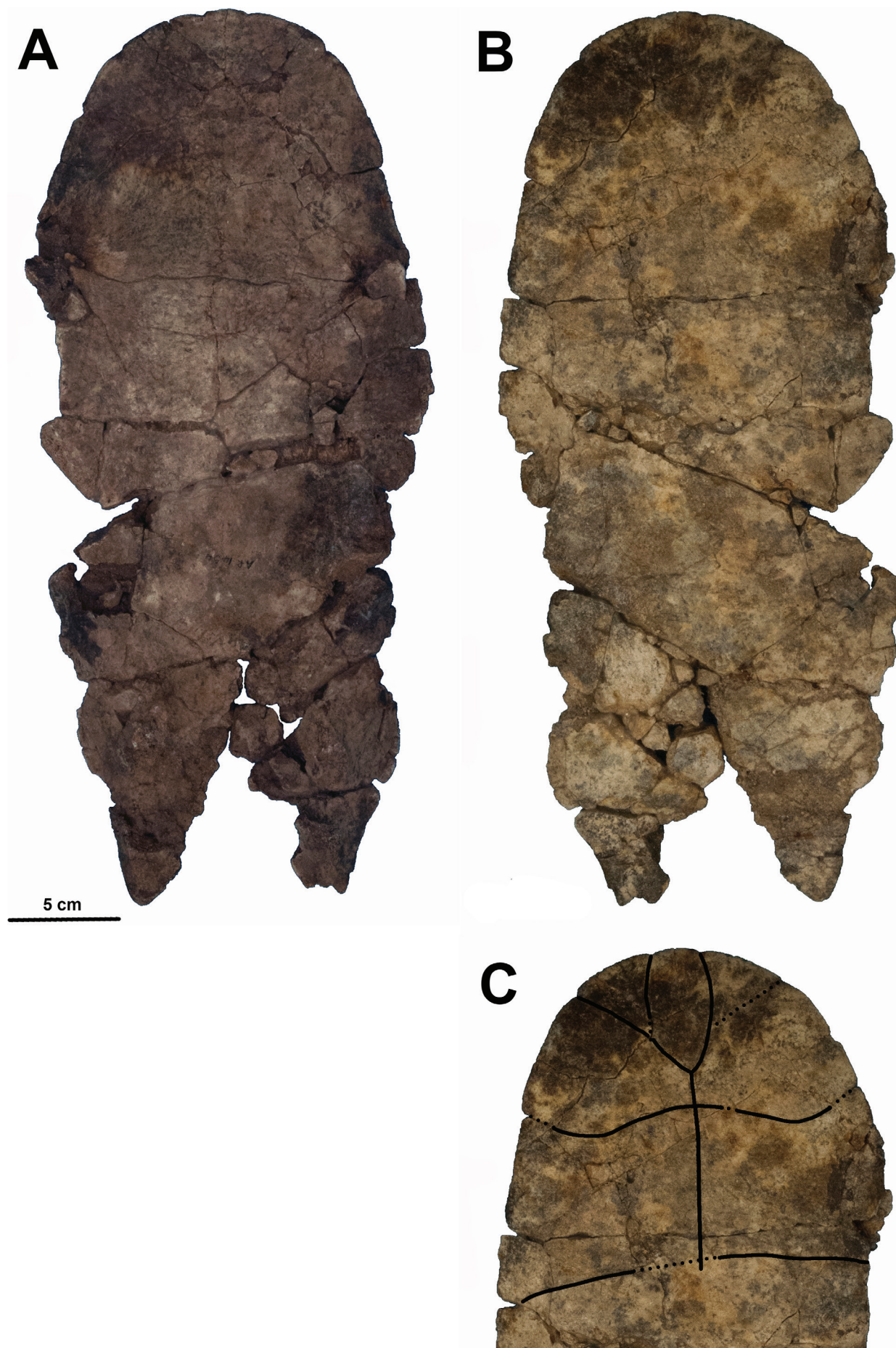


**Figure 1.** Carapace of the fossil holotype of *Elseya lavarackorum* (White and Archer, 1994) (QMF24121). **A** Dorsal view; **B** ventral view; **C** dorsal view with sulci marked where they can reliably be discerned (solid lines). Note the points of most anterior extent establishing the existence of a nuchal bay.

ter central to the re-evaluation of the affinities and therefore identity of the *Elseya lavarackorum* fossils by Joseph-Ouni et al. (2022). It is a character established as taxonomically informative at the level of genus and subgenus in the Australian Chelidae (Thomson et al. 1997; Thomson 2000; Thomson et al. 2015; Thomson and Georges 2009, 2016). A key element of the case made by Joseph-Ouni et al. (2022) rests on their observation that the terminal end of the bridge strut suture is club shaped, and that the medial region of the suture is constricted. The fossil carapace of UNSW QMF24121, when viewed from the ventral (internal) perspective, includes the region of the anterior plastron bridge strut suture (Figs 1A, 5). The

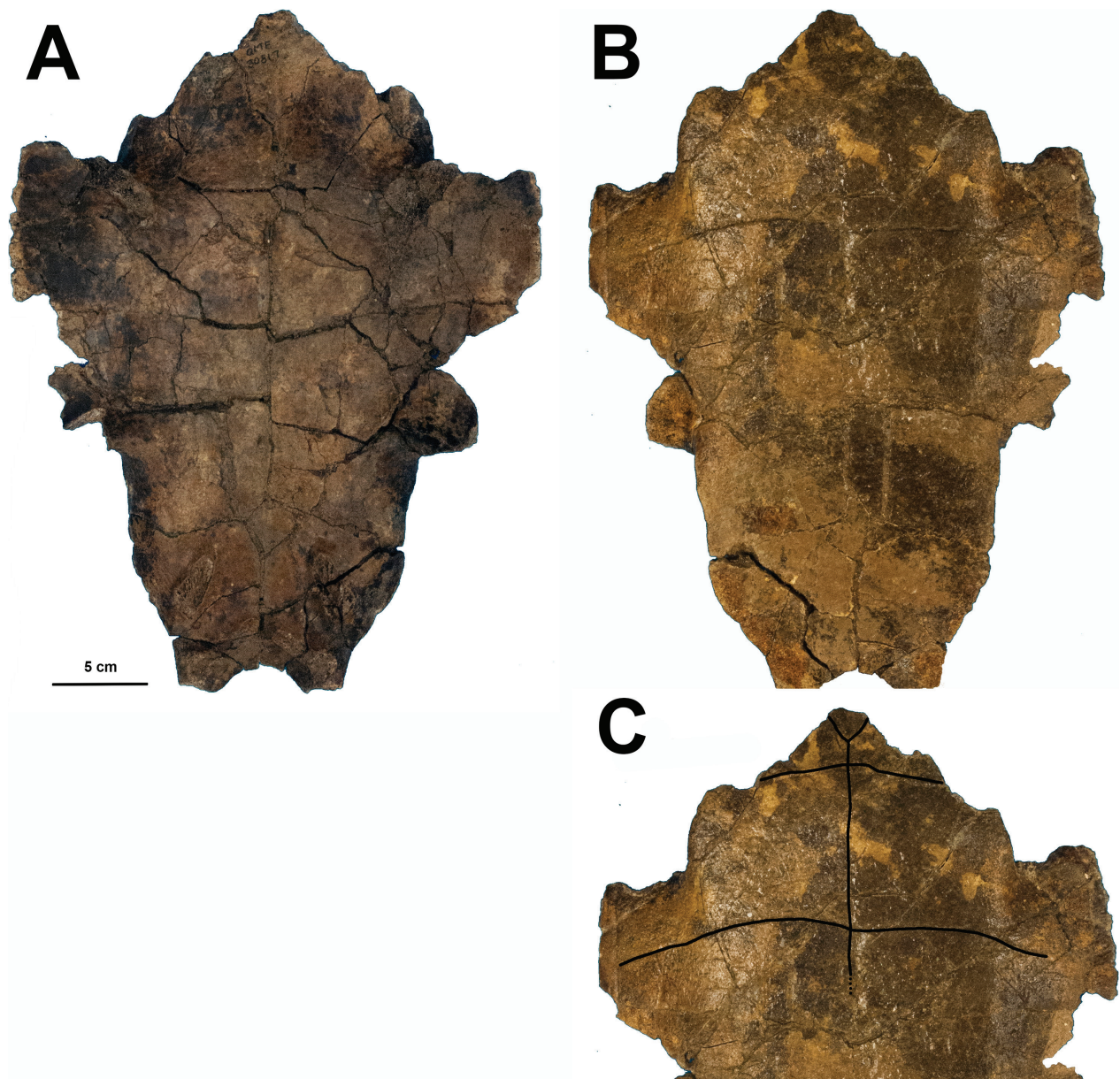
magnitude of the angle of the bridge strut suture relative to the rib element of pleural bone 1 is a feature that clearly places the fossil UNSW QMF24121 in one of the genera *Elseya* or *Emydura* to the exclusion of *Myuchelys*, *Rheodytes*, *Elusor* and *Pseudemydura* (Thomson et al. 1997, their Figures 2 and 3). The bridge strut suture on the left side (turtle's right side) of the pictured fossil (Fig. 5) is relatively intact; on the right side it appears to have been obliterated during mineralization (arrow (a), Fig. 5A). One reason why the one bridge strut suture was preserved is that the connection between plastral elements of the bridge and carapace appear to have been largely intact *in situ*, preventing it from becoming obliterated as did the





**Figure 2.** Plastron of the fossil holotype of *Elsesya lavarackorum* (White and Archer, 1994) (QMF24121). **A** Dorsal view; **B** ventral view; **C** partial ventral view with sulci marked where they can reliably be discerned (solid lines).





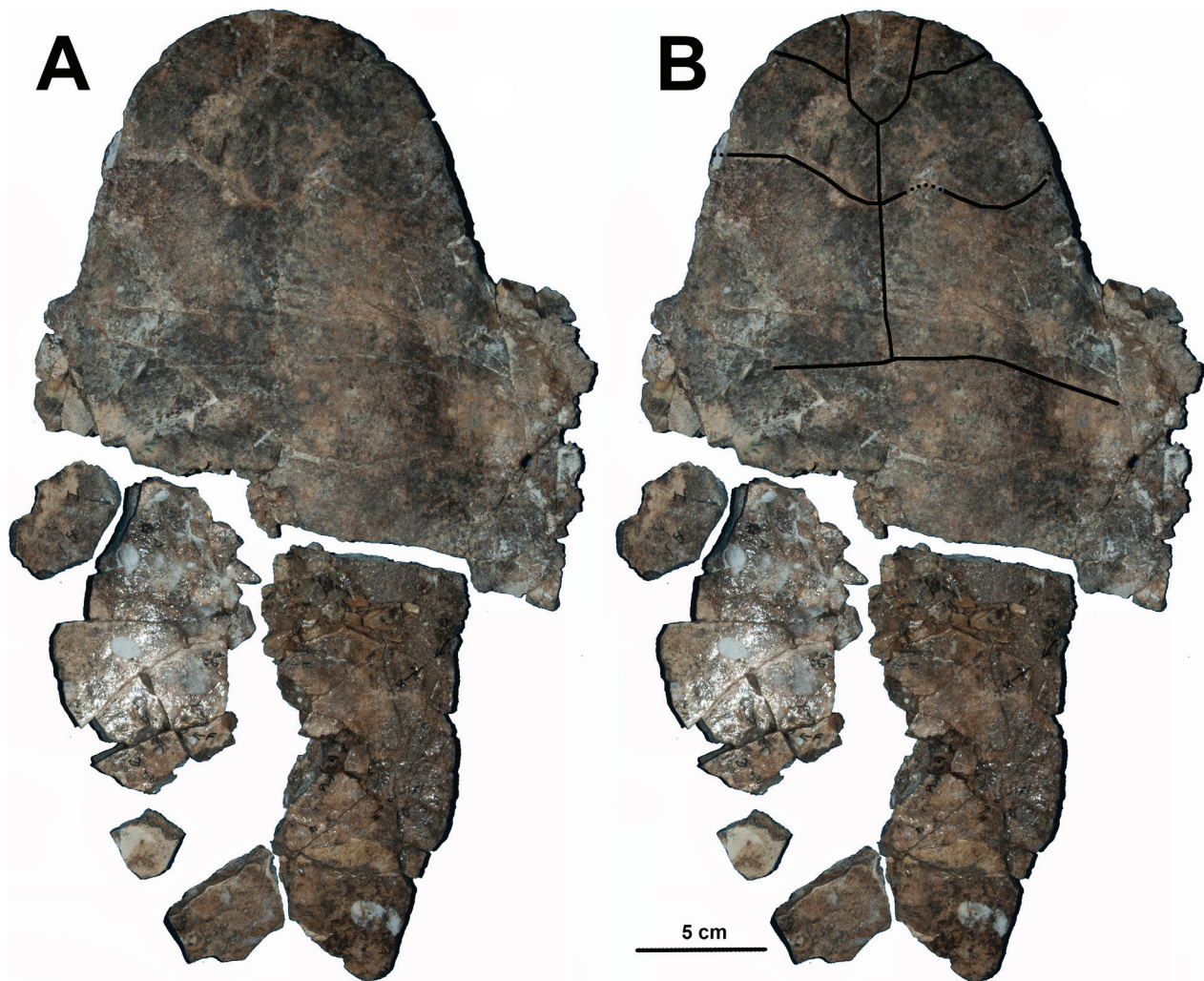
**Figure 3.** Incomplete plastron of the fossil referred to *Elseya lavarackorum* (White and Archer, 1994) by Thomson et al. (1997) by association (QMF30317). **A** ventral view; **B** dorsal view; **C** partial ventral view with sulci marked where they can reliably be discerned (solid lines). The fossil is not sufficiently complete to obtain usable character states relevant to our qualitative discussion.

other suture. The connection between plastron and carapace was physically broken as the fossil was removed for collection. This is evident as sections of freshly broken matrix (arrows (b), (c) and (e), Fig. 5A).

Fragments of the hyoplastron of UNSW QMF24121 remain associated with the bridge strut suture (arrows (c), (e) and (f), Fig. 5A) which complicates identifying the sutural boundary. These plastral remnants extend laterally at the basal and terminal ends of the bridge strut suture to form shelves that obscure the boundary of the bridge strut suture ((c) and (e) of Fig. 5A, 5B). The terminal shelf (e) extends laterally 3.8 mm and the basal shelf (c) extends 4.3 mm. There is also a terminal overhang of 3.3 mm in plastral elements in the vicinity of (f). Joseph-Ouni et al. (2022) have variously included or excluded this plastral material (their Plate 2A, reproduced as Fig. 5C) in their interpretation of the shape of

the anterior bridge strut suture. This renders that interpretation invalid. For example, they include all of the terminal shelf in determining the boundary of the bridge strut suture and only a small part of the basal shelf (Fig. 5C). They miss altogether the region of the most terminal element of the bridge strut suture (labelled (f) in Fig. 5A). Their interpretation of the shape of the terminal suture boundary (“terminal bulb”) represents the shape of the break between the anterior bridge strut and the embedded residual elements of that strut, not the shape of the anterior bridge strut suture itself. This gives rise to the misinterpretation of an “inflated rounded bulb” (Joseph-Ouni et al. 2022), for which there is clearly no convincing evidence. Nor is there evidence of the severe constriction possessed by *Emydura* nor the mid constriction of the suture characteristic of the subgenus *Elseya* (Thomson et al. 1997). Indeed, the contrary is evident in the width of





**Figure 4.** Incomplete plastron of the fossil referred to *Eseya lavarackorum* (White and Archer, 1994) by Thomson et al. (1997) by association (QMF30318). **A** Ventral view; **B** ventral view with sulci marked where they can reliably be discerned (solid lines).

the suture where this can be confidently determined ((d) of Fig. 5A)).

The other two fossils from the Riversleigh Terrace Site (QMF30317, QMF30318) contemporary with the *Eseya lavarackorum* fossil are represented by plastral material only (Figs 3, 4) so that the character state for anterior bridge strut suture cannot be determined.

### Nuchal bay

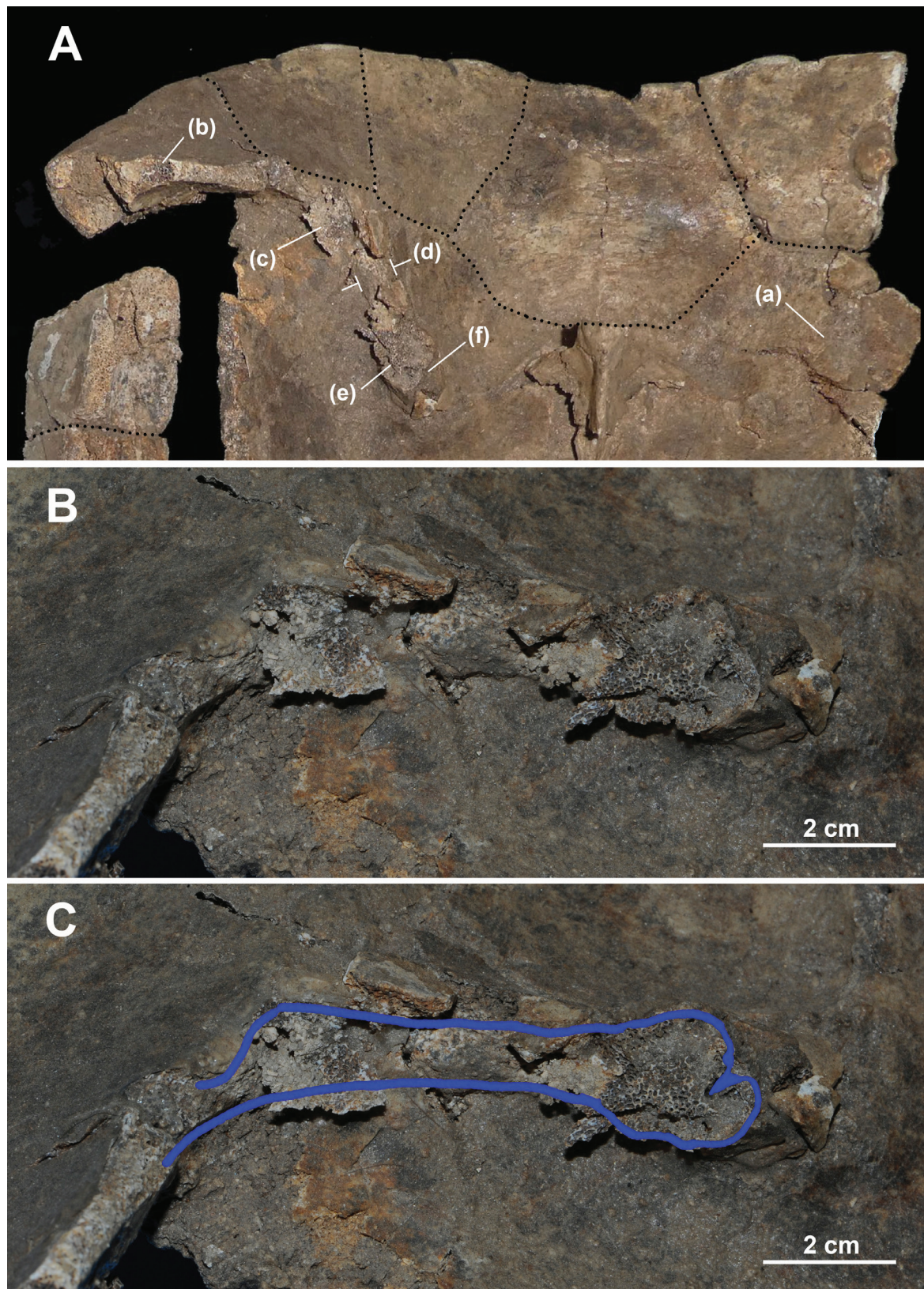
A second character of relevance to the assignment to subgenus of UNSW QMF24121 is the recessed nuchal region of the carapace relative to the adjacent peripheral bones, variously referred to as a nuchal bay, nuchal notch or nuchal emargination (Antunes and de Broin 1988; Gaffney et al. 2006; Brinkman et al. 2008). The ontogenetic extreme state for this character in UNSW QMF24121 and extant members of subgenus *Pelocomastes* (Figs 5A, 6C) has points on the anterior boundaries of marginals M2 as the most anterior points of the carapace, and the carapace does not curve posteriorly until M3. This results in a recessed nuchal region (nuchal bay) evident at marginals M1 and portions of M2. At earlier growth stages,

the anterior peripheral bones are expanded anteriorly and laterally to cause a departure of the shape of the anterior carapace from the typical ovoid shape (Fig. 6A). This then progresses to give a “squared off” anterior to the carapace (Fig. 6). This character state has not been recorded in species of *Eseya* (*Eseya*) regardless of age (see *Eseya* (*Eseya*) *branderhorsti* of Fig. 6A).

The fossil holotype of *Eseya lavarackorum* (UNSW QMF24121) is incomplete, but nevertheless on the right side the most anterior point of the carapace falls on the anterior margin of the Marginal M2. The left M2 is missing so the most anterior point of the remnant carapace on that side falls on the anterior margin of M1. Drawing a line between the two provides a conservative estimate of the presence of a nuchal bay, likely to be more evident had the left M2 been preserved. Thus, the most anterior extent of the carapace of the fossil holotype of *Eseya lavarackorum* lies on the anterior margin of right M2, and a nuchal bay is clearly evident (Fig. 6).

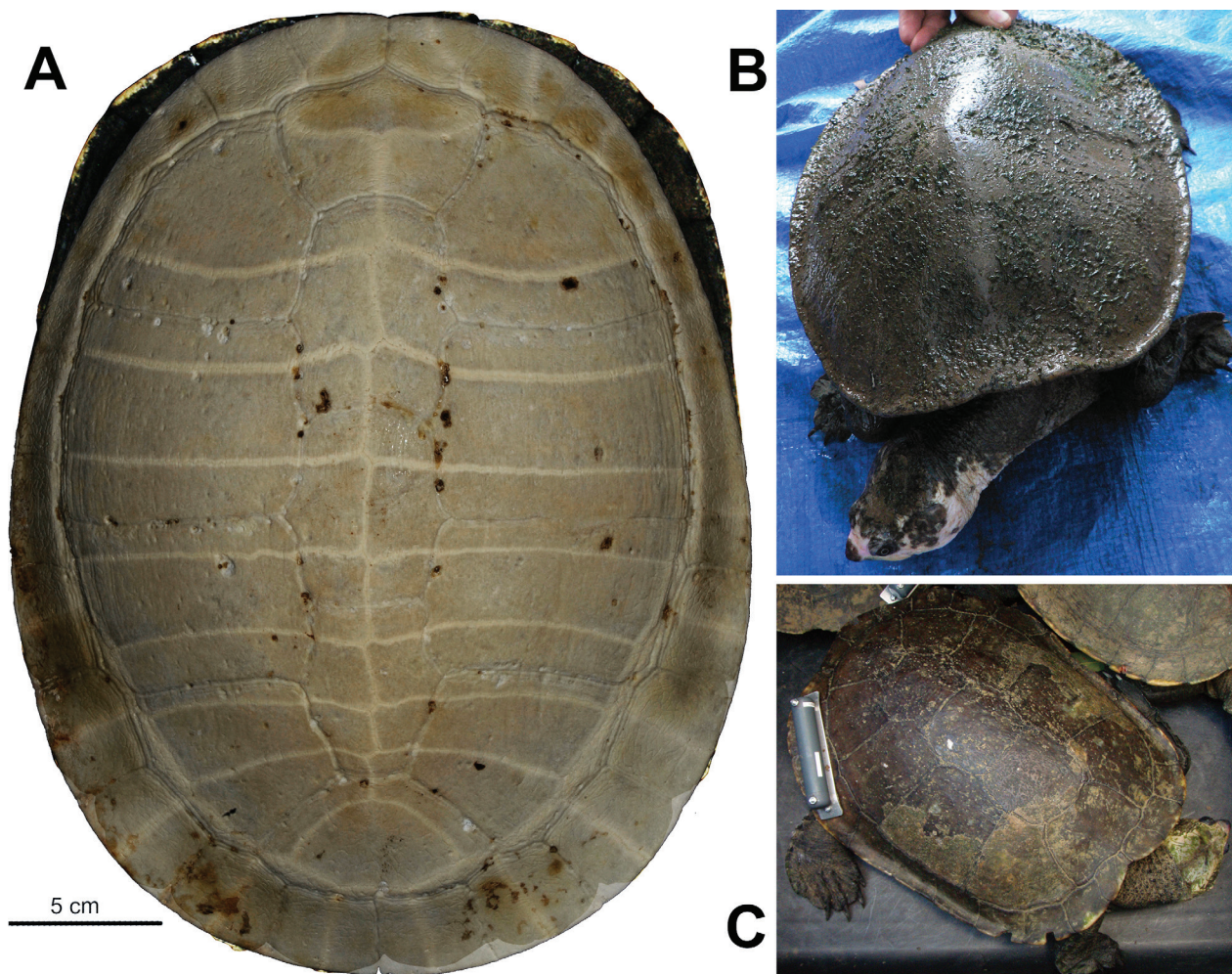
The other two fossils from the Riversleigh Terrace Site (QMF30317, QMF30318) contemporary with the *Eseya lavarackorum* fossil are represented by plastral material only (Figs 3, 4) so that the character state for nuchal bay cannot be determined.





**Figure 5.** The anterior bridge strut suture between the plastral bridge element and the carapace in the holotype of *Elseya lavarackorum* (QMF24121). **A** Ventral (internal) view of the carapace showing the strong angle of the anterior bridge strut suture against the rib element of pleural bone 2, and the prominent anterior bridge strut elements still embedded in the suture; **B** an enlarged view of the region of the suture showing more clearly the breaks that were formed when the carapace was separated from the plastron and the resultant overhangs (labelled (c) and (e) in A above); **C** the boundary of the anterior bridge suture as interpreted by Joseph-Ouni et al. (2022). Note that they have selectively excluded and included plastral elements in their boundary definition [(c) and (e) of A]. Note also that major portion of the suture is not included in their interpretation [(f) of A]. Their boundary of the terminal end of the suture represents the boundary of the shape of the break between the anterior bridge strut and the residual elements of that strut embedded in the suture, not the shape of the anterior bridge strut suture.





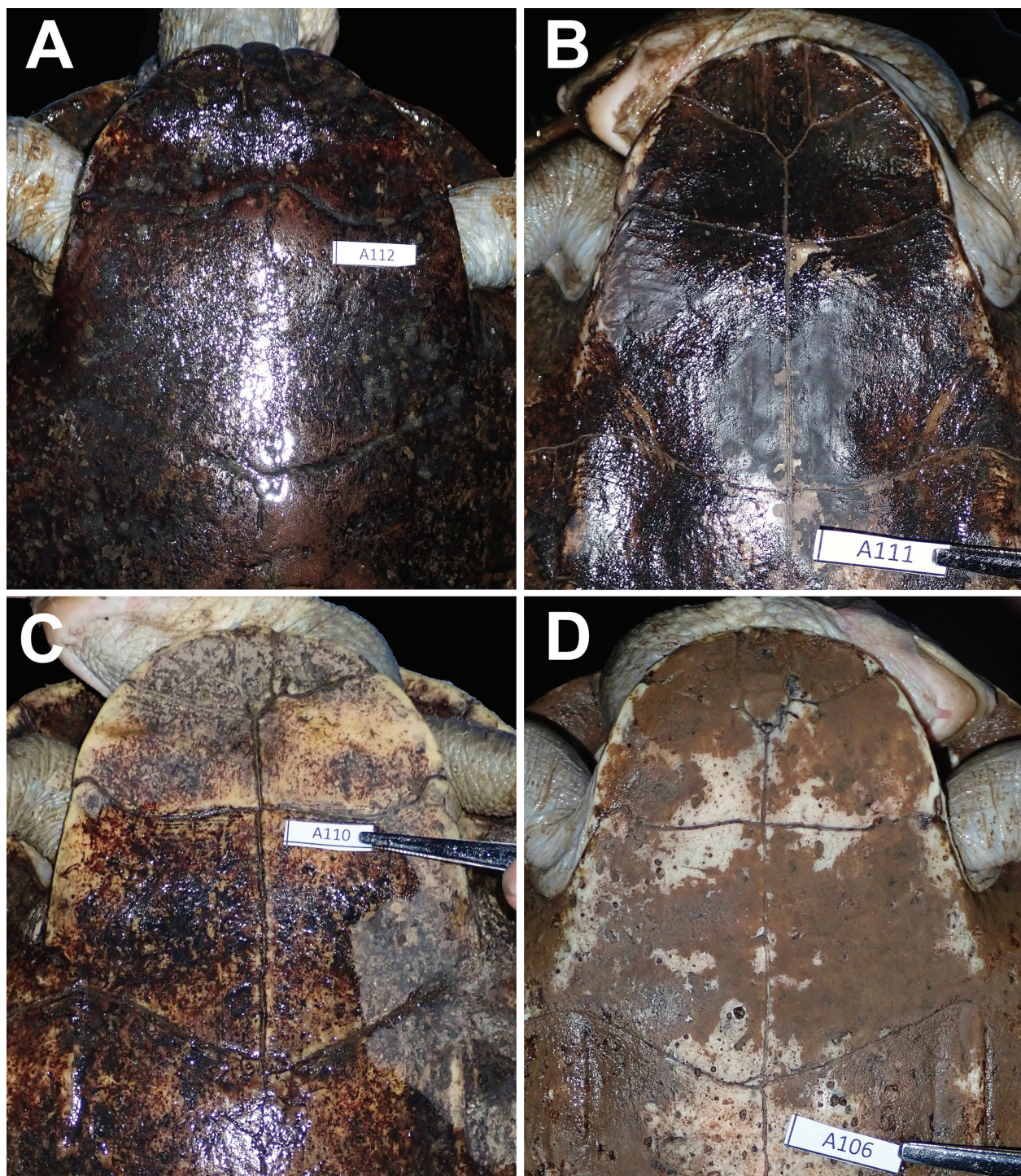
**Figure 6.** Characterisation of shell shape in species of *Elseya* (*Pelocomastes*). **A** Ovoid shell of *Elseya* (*Elseya*) *branderhorsti* (ANWC R08292) overlaid on the holotype of *Elseya* (*Pelocomastes*) *albagula* (QM 81785) to illustrate the lateral expansion of the anterior peripheral associated with marginal scutes M1 and M2 (“squaring off”). In the largest individuals of *Elseya* (*Pelocomastes*) this expansion leads to the development of a nuchal bay, whereby the most anterior points of the carapace are associated with marginals M2, with marginals M1 recessed to a point at their juncture (in the absence of the cervical), a feature of the fossil holotype of *Elseya lavarackorum*. Scale applies to *Elseya branderhorsti*. **B** Aged specimen of *Elseya* (*Pelocomastes*) *lavarackorum* (Boodjamulla National Park, Qld); **C** Aged specimen of *Elseya* (*Pelocomastes*) *irwini* (Johnstone River, Qld). Photos A: Arthur Georges; B: Alastair Freeman; C: Ivan Lawler.

## Scutellation

The fossils of the Riversleigh Terrace Site are unusual in that the scutes of the shell appear to have remained incorporated into the fossils. As a consequence, the bony sutures of the carapace and plastron are less prominent on the surfaces external to the shell, and the sulci are evident as scute junctions rather than indentations in the underlying bone. Joseph-Ouni et al. (2020, 2022) considered a range of characters derived from scute variation. Scutes and their associated sulci provide challenging characters because of high variability among individuals. This presumably arises from underpinning interindividual genetic variation coupled with environmental influences during development (Lynn and Ullrich 1950; Zimm et al. 2017) that often manifests as asymmetry (Cherepanov 2014). For example, a comprehensive survey of scute variants in *Emydura macquarii nigra* found that such variants were present in 28.8% of individuals ( $n = 670$ ), with 81.8% of

scute additions or deletions occurring in the anterior of the shell (Georges, 1982, reproduced in Supplementary Table S3 and Table S4). As an example of sulci variation that does not involve gain or loss of entire scutes, we examine the character first noted by White and Archer (1994) in their description of the fossil *Elseya lavarackorum* (as *Emydura lavarackorum*), that is, a sigmoidal rather than straight humeral-pectoral seam. This character was redefined and used by Joseph-Ouni et al. (2022) to distinguish *Elseya lavarackorum* from the extant *Elseya* sp. aff. *dentata* [Nicholson]. Thomson et al. (1997) noted this character but did not place particular importance on it as being of taxonomic value. This is for good reason. This character adopts almost all character states in individuals of extant *Elseya lavarackorum* as inter-individual variation (Fig. 7), including the state possessed by the fossil. Furthermore, the states for this highly variable character have a profound effect on other adjacent sulci characters, such as the length of the interhumeral sulcus, and through





**Figure 7.** Variation in the humeral-pectoral sulcus in extant *Elseya lavarackorum* from the Roper River, NT. **A** Specimen A112 shows the character state represented by the fossil holotype *Elseya lavarackorum* (sinuoidal sulcus sensu White and Archer 1994); **B** specimen A111 exhibits another variant of the humeral-pectoral sulcus; **C** specimen A110 shows the character state considered important by Joseph-Ouni et al. (2022); **D** specimen A106 shows the character state typical also of *Elseya dentata*. The character state of QMF30818 (inverted sinuoidal cf (a) *lavarackorum*, Fig. 4) is not represented in the specimens we have available. The character is not scorable in the partial plastron of QMF30817 (Fig. 3). This character state will have a substantial influence on the length of the interhumeral sulcus, and thus on all sulci characters that involve this length. Photos: Dion Wedd.

it, the relative penetration of the intergular in separating the humerals.

As an example of variation in a meristic character, the sulci between the first vertebral scute V1 and the first costal scute C1 join to marginal scutes M3 in the *E. oneiros* holotype (QM J47908, arguably a rare aberration) where-

as they typically join on each side to marginal scutes M2 in other specimens depicted by Joseph-Ouni et al. (2020) (arguably the typical condition; e.g. their Plate 8d(QM J31946), Plate 12b(E), Plate 12d(QM J77959). In a specimen of *Elseya dentata* (their Plate 8b(B)), the sulcus joins marginal scute 3 on one side and marginal scute 2 on the



other side, indicating that this character is under developmental influence (Cherepanov 2014), presumably from the incubation environment. Morphometric scute characters can show considerable ontogenetic variation, as in the anterior marginal region of *Elseya* (*Pelocomastes*) associated with the formation of the nuchal bay (Fig. 6), so that cross-species comparisons using relatively few individuals of different sizes/ages is problematic.

Furthermore, many of the scute characters of Joseph-Ouni et al. (2020) depend one upon the other, and so cannot be considered independent. In some cases, they are used in part-whole correlation/regression analysis without acknowledgement of the statistical consequences (Davis 1958). The intergular scute of the *Elseya oneiros* holotype is extremely narrow (Plate 10 and Plate 13b of Joseph-Ouni et al. 2020), a second infrequent aberration in this type specimen. This is likely to have consequences for other anterior plastral scute sulci and their measurement.

## Other Characters

Joseph-Ouni et al. (2022) identified nine new characters, their characters F–N, that they argue distinguish between *Elseya lavarackorum*, *E. oneiros* and *E. dentata*. In our view these characters suffer from a number of deficiencies. Some are highly variable across taxa, including the three focal taxa (e.g. Character F). Some are profoundly influenced by the misinterpretation of the Anterior Bridge Strut Suture (Fig. 5) (e.g. H, K, L and M). For example, Character M has state M0 under the misinterpretation of the outline of the Anterior Bridge Strut Suture, but M2 if the full extent of the suture is considered. Other characters are likely to be subject to ontogenetic variation as shell shape changes with age (Cadena et al. 2008; Ferreira et al. 2016), a possibility that has not been addressed using an ontogenetic series. Many of their characters are co-dependent. For example, their Characters G, H, J and K and Character A (incorrectly attributed to Thomson et al. 1997) are co-dependent. They are also likely subject to ontogenetic change with change in shell shape with age which dictates that, at the very least, individuals of the same size/age should be compared. None of these characters have been scored across sufficient taxa to make a useful contribution to the phylogeny used to establish the placement of *E. lavarackorum* (Fig. 8).

## Phylogeny

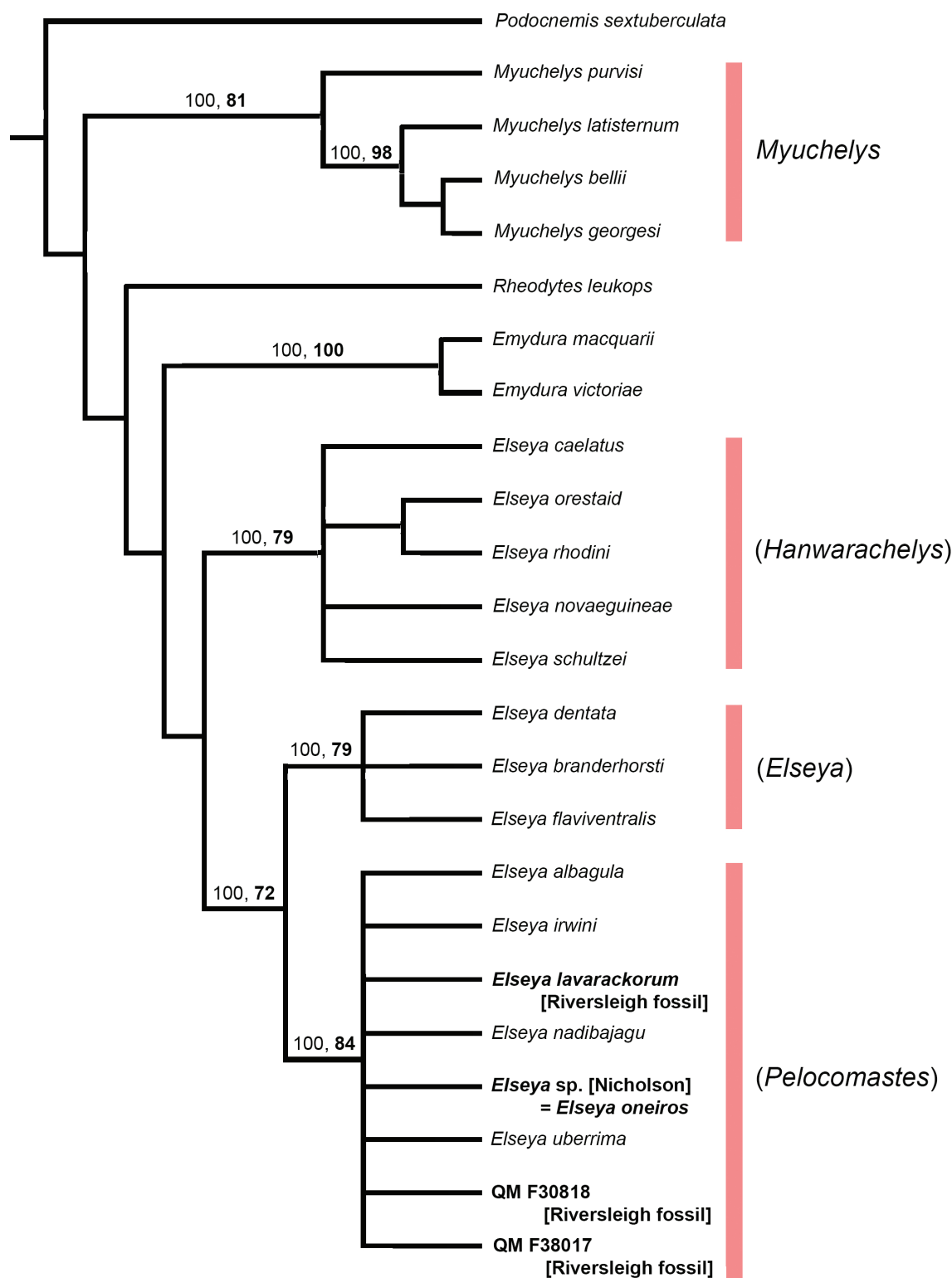
Generating a robust phylogeny using a combination of fossil and extant taxa is challenging because the fossils are often partial whereby the matrix of character states (Table S1) is sparse, with many characters unable to be scored. Nevertheless, we were able to generate a phylogeny (Fig. 8, maximum parsimony consensus tree) with clades relevant to the focus of this paper well supported by consensus and bootstrap values (Fig. 8). A clade comprising of species of *Elseya* (*Elseya*) was well supported

with 100% consensus and a bootstrap score of 79% (*E. dentata*, *E. flaviventralis*, *E. branderhorsti*), as was its sister clade *Elseya* (*Pelocomastes*) with 100% consensus and a bootstrap score of 84%. Although the internal arrangements were unresolved (a polytomy), the *Pelocomastes* clade comprised the extant *Elseya albagula*, *E. irwini* and *Elseya* sp. aff. *dentata* [Nicholson]. This support for the two clades and the species that make them up is consistent with the results of molecular analyses (Seddon et al. 1997; Georges et al. 1999; Todd et al. 2014). This clade also includes the type species *Pelocomastes uberrima* (de Vis, 1897) and the fossil species *Elseya nadibajagu* Thomson & Mackness, 1999 both previously assigned to this group (Thomson 2000; Thomson et al. 2015). The fossil *Elseya lavarackorum* (QMF24121) and the two other fossils assigned to this species by Thomson et al. (Thomson et al. 1997, QMF30817, 30818) fall within the *Pelocomastes* clade (Fig. 8). The placement of QMF30187 and QMF30818 within the *Pelocomastes* clade was not resolved, and on the basis of this evidence alone they could not be assigned reliably within this subgenus (= *Pelocomastes* sp. incertae cedis). Nor is it possible to refute the proposition that they belong to the taxon *Elseya* (*Pelocomastes*) *lavarackorum*, as proposed by Thomson et al. (1997).

Although not directly relevant to the questions posed in this paper, the phylogeny provides information of broader relevance to chelid phylogeny. Caution is required in the interpretation of the topology, particularly where the support values are low. The three clades of *Elseya* represented as the subgenera are well supported by allozymes (Georges and Adams 1992), mtDNA sequences, nuclear DNA sequences (Seddon et al. 1997; Georges et al. 1999; Todd et al. 2014) and morphology (Thomson and Georges 2009; Thomson et al. 2015 and Fig. 8). The clade *Hanwarachelys* is distinctive, and its affinities have been particularly problematic (Boulenger 1889; Goode 1967; Georges and Thomson 2010). The monophyly of the genus *Elseya* has not been definitively demonstrated and is considered unlikely taken in the context of the genera *Myuchelys* Thomson & Georges, 2009 and *Birlimarr* Megirian & Murray, 1999.

## Taxonomy

The lectotype of *Pelocomastes ampla*, type species for *Pelocomastes* is partial and its synonymy with *Chelymys uberrima* (Thomson 2000) was based on their being from the same locality and horizon, and not being able to distinguish them as taxa at the level of species. The name *Pelocomastes* is applied to the clade of Queensland *Elseya* as the oldest available name. This is currently a nomenclatural stable arrangement that could be further consolidated by assigning a neotype for *Pelocomastes ampla* from the same horizon and locality as the lectotype. The most diagnosable fossil candidate for such a neotype is the lectotype of *Chelymys uberrima*. Its se-



**Figure 8.** A phylogeny (Majority Rule Consensus Tree, length 153) of 24 extant and fossil species of chelid turtle based on 106 morphological characters (Tables S1 and S2). Pelomedusoid *Podocnemis sextuberculata* was the outgroup taxon. Note that the clades representing subgenera *Elseya* and *Pelocomastes* have high consensus (first value on nodes) and strong bootstrap support (second value on nodes). The fossil material from the Riversleigh Terrace Site and the extant *Elseya* sp. aff. *dentata* [Nicholson] fall in the *Pelocomastes* clade.

lection as a member of the Queensland *Elseya* would achieve stability, avoiding possible challenge to the priority of the names *Chelydera*, *Elusor*, *Myuchelys* or *Rheodytes*, all potentially junior synonyms to *Pelocomastes* should it ever be elevated to genus. The type exists and

is available, so if one were to pursue the option of setting a neotype for *Pelocomastes* (e.g. lectotype of *Chelymys uberrima* which is from the same locality and horizon as *P. ampla*) it would require a decision of the International Commission of Zoological Nomenclature (ICZN).

## Subfamily: Chelodiniinae Baur, 1893 sensu Zhang et al. (2017)

### Genus *Elseya* Gray, 1867

#### Subgenus: *Elseya* Gray, 1867 sensu Thomson et al. (2015)

**Type species.** *Chelymys dentata* Gray, 1863 (= *Elseya* [*Elseya*] *dentata* [Gray, 1863] sensu Thomson et al. 2015)

**Included species.** *Elseya* [*Elseya*] *branderhorsti* (Ouwens, 1911) sensu Thomson et al. (2015), *Elseya* [*Elseya*] *flaviventralis* Thomson & Georges, 2016 sensu Thomson et al. (2015).

#### Subgenus: *Hanwarachelys* Thomson et al., 2015

**Type species.** *Platemys novaeguineae* Meyer, 1874 (= *Elseya* [*Hanwarachelys*] *novaeguineae* [Meyer, 1874: 128] sensu Thomson et al. 2015).

**Included species.** *Elseya* [*Hanwarachelys*] *caelatus* Joseph-Ouni & McCord, 2019: 25 sensu Joseph-Ouni and McCord (2019), *Elseya* [*Hanwarachelys*] *orestiad* Joseph-Ouni & McCord, 2019: 47 sensu Joseph-Ouni and McCord (2019), *Elseya* [*Hanwarachelys*] *schultzei* (Vogt, 1911: 410) sensu Thomson et al. (2015) and *Elseya* [*Hanwarachelys*] *rhodini* Thomson et al., 2015: 69 sensu Thomson et al. (2015).

#### Subgenus: *Pelocomastes* de Vis, 1897 sensu Thomson et al. (2015)

**Type species.** *Pelocomastes ampla* (= *Elseya* [*Pelocomastes*] *uberrima* de Vis, 1897 sensu Thomson 2000, Thomson et al. 2015).

**Included species.** *Elseya* [*Pelocomastes*] *albagula* Thomson, Georges & Limpus, 2006 sensu Thomson et al. (2015), *Elseya* [*Pelocomastes*] *irwini* Cann, 1996 sensu Thomson et al. (2015), *Elseya* [*Pelocomastes*] *lavarackorum* (White & Archer, 1994: 159) sensu Thomson et al. (2015) and *Elseya* [*Pelocomastes*] *nadibajagu* Thomson & Mackness, 1999 sensu Thomson et al. (2015).

**Field identification.** Although many of the external characters are highly variable and thus not diagnostic when considered individually, it is possible to provide guidance for the identification of extant *Elseya* [*Elseya*] *dentata* and *Elseya* [*Pelocomastes*] *lavarackorum*. This is particularly important where they occur in sympatry (e.g. the Roper River, NT, Georges et al. 2021). The typical features that distinguish the two are shown in Figs S2–S4. *Elseya* [*Pelocomastes*] can be distinguished from *Elseya*

(*Elseya*) by the presence of extensive lingual ridges in addition to the alveolar ridges on the rhamphotheca; an interangular scute that moderately separates the humerals, at most half (half or more in *Elseya* [*Elseya*]); serration of the rear of the carapace that extends into adulthood; and departure from the classical ovoid shape of the carapace (typified by *Elseya* [*Elseya*], Fig. 6) by squaring off of the anterior carapace in *Elseya* [*Pelocomastes*] leading ultimately to a nuchal bay in the largest, oldest individuals (Fig. 6). *Elseya* [*Pelocomastes*] *lavarackorum* can be further distinguished from *Elseya* [*Elseya*] *dentata* by the presence of red flushing on the undersurface of the limbs and on the feet (Fig S3), and the reticulate patterning of the temporal region of the head, fading with age (Fig S3). If genotyping is available (e.g. DArTcap, Guppy et al. 2020), the distinction between the two (and between *Elseya* [*Pelocomastes*] *lavarackorum* and *Elseya* [*Elseya*] *flaviventralis*) is definitive (Georges et al. 2021).

## Discussion

We re-examined the fossil material relevant to *Elseya* [*Pelocomastes*] *lavarackorum* (White and Archer, 1994) and considered the interpretation of characters by Joseph-Ouni et al. (2022) in coming to their conclusion that the fossil *Elseya* *lavarackorum* and the extant *Elseya* sp. aff. *dentata* [Nicholson] (Georges and Adams 1992, 1996) are different species. We question their interpretation of the shape of the anterior bridge strut suture where Joseph-Ouni et al. (2022) state that the axillary buttress (our anterior bridge strut) suture is medially constricted with a bulb terminus that is easily discernible (caption of Plate 4B, Joseph-Ouni et al. 2022). Joseph-Ouni et al. acknowledge that the suture contains substantial embedded plastral elements but did not consider the impact of these elements on the interpretation of the shape of the “terminal bulb”. Instead, Joseph-Ouni et al. define the shape of the terminal region of the anterior bridge strut suture as the boundary of the breakage between associated embedded plastral elements and the plastral bridge strut (Fig. 5C). These elements include a substantial shelf that extends 3.8 mm laterally from the bridge strut suture. The boundary of the breakage does not provide an indication of the shape of the terminal end of the anterior bridge strut suture, nor does this “terminal bulb” support the conclusion of a medial constriction. Indeed, we have argued that, on the basis of measurements where the suture is not obscured by embedded plastral elements, there is no evidence of a medial constriction. Indeed, it is probably impossible to make a judgement on the shape of the anterior bridge suture given the degree to which it is obscured by residual plastral elements. We conclude that there is no evidence that the shape of the anterior bridge strut suture in the fossil *Elseya* *lavarackorum* (UNSW QMF24121) departs in any substantial or demonstrable way from what is observed in extant species of the subgenus *Pelocomastes*. The combined absence of a cervical



scute and presence of a nuchal bay in the fossil *Elseya lavarackorum*, an aged individual, is further confirmation that the fossil lies in the subgenus *Pelocomastes* (rarely, aged individuals of subgenus *Hanwarachelys* can have a recessed cervical scute). The nuchal bay is a shared derived character for *Pelocomastes*. This feature, and the marginal scutes M2 as the most anterior point on the carapace is unique among Australian chelids, restricted to species of subgenus *Pelocomastes* (*E. albagula*, *E. irwini*, *E. lavarackorum*), notwithstanding its ontogenetic variation (present only in the largest, aged individuals).

The analysis of Joseph-Ouni et al. (2020, 2022) relies heavily on the interpretation of scutellation variation. We have shown that considerable inter-individual variation in scutellation (Fig. 7) renders such characters of questionable taxonomic value. The inter-individual variation in scutellation we have identified are examples of the challenges in using scute characters from a single individual (e.g. the *Elseya lavarackorum* fossil) in species assignment. For this reason, we reject the overall selection of scute characters and the analysis of scute character states presented by Joseph-Ouni et al. (2020, 2022) as inconsistent, unreliable and of questionable taxonomic value in resolving the species identity and affinities of the *Elseya lavarackorum* fossil (UNSW QMF24121).

We are not arguing that scute characters are of no value taxonomically. Clearly, the contact or lack of contact of the gular scutes anterior to the intergular is an important diagnostic character at the level of genus in the Australian Chelidae. The numbers of costal and vertebral scutes are important taxonomic characters for the species identification of marine turtles (Wyneken 2001). The issue is to decide which such characters are well-defined and consistent at the level of species taxonomy for the group under scrutiny, and not subject to unacceptable inter-individual variation within putative species. In some cases, ontogenetic variation needs to be considered, such as when a distinction not evident in subadults is diagnostic in adults (e.g. the nuchal bay). Sexual dimorphism is also a source of variation which, if sex is not known as is typically the case with fossils, can generate false distinction between two putative taxa (Bunce et al. 2003). Good taxonomic characters should not be metrically dependent, as is the length of the interhumeral sulcus and the degree of penetration of the intergular to partially separate the humerals. The most valuable scute characters are likely to be those accompanied by a character state shift in the underlying bone elements. We argue that Joseph-Ouni et al. (2022) have not established their sulci characters as well-defined and consistent at the level of species taxonomy, as our examples demonstrate (Fig. 7).

Even given the above caveats, scutellation characters may be informative and form part of the description of the Type material, but not in a diagnostic sense. Scutellation characters can be used to capture differences in the pattern of interindividual variation between putative species that overlap to varying degrees in different putative species using Principal Components Analysis (PCA) or Discriminant Analysis (DFA). This requires capturing a good representation of that interindividual variation for

all taxa under consideration and of course, that is very seldom possible when examining fossil forms; it is certainly not possible to capture interindividual variation in the population from which the fossil *Elseya lavarackorum* (UNSW QMF24121) was drawn, given the limited and incomplete fossil material available. Without available information on interindividual variation in both the fossil putative taxon and the extant putative taxon, it is not possible to assess the level of overlap in morphological space. PCA and DFA require dense data matrices of characters against putative species, seldom achievable when working with incomplete fossil specimens. This is the tyranny of limited fossil material in the context of fossil-extant taxon comparisons. These issues have not been adequately addressed by Joseph-Ouni et al. (2022) in the case they make for overturning the assignment of the extant gulf snapping turtle to *Elseya lavarackorum* (White and Archer, 1994).

Marrying the procedures for defining species based on extant and fossil taxa is challenging (Vitek 2018). The two disciplines, palaeontology and taxonomy of extant forms, work under fundamentally different constraints. In zoology, species are natural units defined on reproductive barriers to gene flow, notwithstanding operational challenges for their delineation. In palaeontology, addition of the time factor requires limits that are subjective and more or less arbitrary, and in any case different from the limits in zoology (Drooger 1954). Vertebrate palaeontology typically works with one or a very few specimens and so is unable to assess characters against a backdrop of inter-individual variation within species. Best practice in describing extant forms draws upon a pool of available specimens for the putative new species and for those against which it is compared to establish a defensible character analysis. Paleontologists have to consider the concept of chronospecies, taxa on the same evolutionary lineage, but separated by time and the accumulation of some morphological change (Dzik 1990; Futuyma 2005). In contrast, species delimitation of extant forms needs to consider time in the form of phylogenetic history of the extant lineage and those closely related to it, but the exercise is largely constrained to a snapshot in time, the present.

The two perspectives come together when considering species delineation of very young fossils and sub-fossils. The fossil material, usually represented by a single specimen or a few specimens, is compared to living forms for which there are abundant data to capture inter-individual variability. Under this framework, there are two ways to argue that the fossil *Elseya lavarackorum* and the extant *Elseya* sp. aff. *dentata* [Nicholson] (Georges and Adams 1992, 1996) are different species (see also steps outlined by Dzik 1990). The first is to demonstrate that the fossil *E. lavarackorum* and the fossil and extant *E. oneiros* are on different evolutionary trajectories. Joseph-Ouni et al. (2020) argue that *E. lavarackorum* is a member of the *Elseya* genus/clade whereas *E. oneiros* is a member of the *Pelocomastes* genus/clade. We argue that the *Elseya lavarackorum* fossil has a clear *Pelocomastes* character that is uniquely present in aged individuals in that sub-

genus. Joseph-Ouni et al. (2020) are correct in noting that this character is variable (it is subject to ontogenetic variation and rarely present in *Elseya albagula*), but incorrect in concluding that it is of no taxonomic value in assigning the fossil to a subgenus. This is a shared derived character state that unites the extant *Pelocomastes* including the fossil *E. lavarackorum*. Our phylogenetic analysis (Fig. 8) places the fossil *E. lavarackorum* clearly within the subgenus *Pelocomastes*. There is therefore no evidence to regard the fossil *E. lavarackorum* and the extant *Elseya* sp. aff. *dentata* [Nicholson] as residing on different evolutionary lineages.

The second way to make a case that the fossil *Elseya lavarackorum* and the extant *Elseya* sp. aff. *dentata* [Nicholson] are different species is to argue that they are chronospecies, that is, that they are on the same evolutionary lineage, with the more recent individuals having diverged sufficiently from the earlier individuals to warrant them being considered as separate species. It is a significant challenge to demonstrate that variations seen between a single ancient fossil and modern-day individuals of the same species are not just a result of natural adaptations within the same species. The fossil that is from late Pleistocene sediments, aged by carbon dating (and companion fossils) at 23.9 Ka BP (+4100–2700) (Davis and Archer 1997). For context, human remains have been discovered and dated in Australia at  $62 \pm 6$  Ka (Thorne et al. 1999). The period of 23.9 Ka BP is arguably too short to support the evolution of two chronospecies, even taking into account the errors in this age determination (Davis and Archer 1997). Joseph-Ouni et al. (2022) have not, on the basis of our analysis, demonstrated that the young fossil *Elseya lavarackorum* and the extant form represent distinct chronospecies.

We argue that Joseph-Ouni et al. (2022) have dismissed characters that are taxonomically of value (e.g. the squaring off of the anterior carapace and ultimately formation of a nuchal bay in aged individuals), have misinterpreted characters (e.g. the bridge strut suture confounded by retained plastral elements), and have selectively placed weight on characters that vary so greatly among individuals as to be of limited value taxonomically for distinguishing species. Their statistical analyses are flawed (e.g. unacknowledged part-whole correlations and functional dependencies among characters) or incomplete (no multivariable analyses). They do not undertake a phylogenetic analysis to ascertain the affinities of the fossil (subgenus *Elseya* or *Pelocomastes*) and in any case, the distribution of character states across their putative taxa is so sparse as to render them uninformative in such a phylogenetic analysis. We therefore argue that there is no foundation in the works of Joseph-Ouni et al. (2020, 2022) for rejecting the proposition that *Elseya lavarackorum* (White and Archer 1994) and the extant *Elseya* sp. aff. *dentata* [Nicholson], separated by only *ca* 23 Kyr, are the same species. To bring this point home, the holotype of *Elseya oneiros* Joseph-Ouni et al., 2020 differs from other individuals of the taxon it represents, *Elseya* sp. aff. *dentata* [Nicholson], in two important respects – the sulci of V1 join with M3 not M2 on each side and the

intergular is exceptionally narrow. Were this specimen a fossil, and were weight placed on sulci characters as have done Joseph-Ouni et al. (2022), this individual would be a new species distinct from the extant *Elseya* sp. aff. *dentata* [Nicholson]. Scute sulci are highly variable among individuals and cannot reliably be used in species delimitation without demonstrating their consistency, especially when the material at hand is a single individual.

We note that Joseph-Ouni et al. (2022) pay particular attention to arguing that Thomson et al. (1997) have not demonstrated the two, *Elseya lavarackorum* and *Elseya* sp. aff. *dentata* [Nicholson] (Georges and Adams 1992, 1996), are the same species. However, Thomson et al. (1997) concluded instead that the differences between the two were not sufficient to reject the proposition that they were the same species. In that paper, we followed a well-established process of viewing conspecificity as the null proposition, to be challenged or otherwise by the publication of defensible evidence and analysis that refutes that null proposition. The onus is on others to demonstrate, through re-examination of the evidence and interpretation of characters relevant to the *Elseya* and related taxa, and the presentation of new defensible characters, that the two represent distinct species. Joseph-Ouni et al. (2022) have not done this.

## Conclusion

Based upon our reanalysis of the fossils and associated characters in the extant forms, including those of subgenus *Pelocomastes*, we find that the differences between the fossil *Elseya lavarackorum* (White and Archer, 1994) and *Elseya* sp. aff. *dentata* [Nicholson] (Georges and Adams 1992, 1996) are not sufficient to overturn the current taxonomy that considers the two to be the same species. We consider the assignment of the *Elseya lavarackorum* fossil to the subgenus *Elseya* to be incorrect, and that its affinities lie with the subgenus *Pelocomastes*, so nor is there evidence that the fossil and the extant form are on separate evolutionary trajectories. The young age of the fossil is relevant (approx. 23.9 Ka BP). We place *Elseya oneiros* (Joseph-Ouni et al., 2020) as a junior synonym to *Elseya lavarackorum* (White and Archer, 1994).

## Author Contributions

DW collected and photographed the specimens of *Elseya lavarackorum* and *Elseya dentata* from the Roper River drainage; AG and AW examined, photographed and measured the fossil specimens lodged with the UNSW PaleoLab collection; as lead author, ST provided expert input to the interpretation of the fossil materials and contributed his knowledge of the genus *Elseya* and related taxa (Thomson 2015); ST and NRF undertook the character analysis in support of the phylogenetic analysis undertaken by ST and AG; as senior author, AG led the writing of the manuscript to which all authors contributed.

## Acknowledgements

We thank Mike Archer and Anna Gillespie (UNSW PaleoLab) for providing access to the fossil specimens, and Kristen Spring (Collection Manager – Geosciences (Ancient Environments), Queensland Museum) and Anna Gillespie for assistance in locating the fossil specimens. Support for Riversleigh fossil research has come from the Australian Research Council (DP170101420 to M. Archer and S.J.H.), P. Creaser and the CREATE Foundation, UNSW Sydney, Environment Australia, Queensland Parks and Wildlife Service, Outback at Isa, the Waanyi people of northwestern Queensland, and many students and volunteers who have contributed to Riversleigh research in the field and in the laboratory. ST and NRF wish to acknowledge the support for our work by Hussam Zaher and his lab at the Museu de Zoologia da Universidade de São Paulo in Brazil. Alistair Freeman and Ivan Lawler provided photographs where indicated in the Figure captions. Anders Rhodin provided valuable comment on an earlier draft of this manuscript; Walter Joyce, Marcelo de la Fuentes and an anonymous reviewer provided insightful comments during the review process.

## References

- Antunes MT, de Broin F (1988) Le Cretace terminal de Beira Litoral, Portugal: remarques stratigraphiques et ecologiques; etude complementaire de Rosasia soutoi (Chelonii, Bothremydidae). *Ciências da Terra* 9: 153–200.
- Archer M, Bates H, Hand SJ, Evans T, Broome L, McAllan B, Geiser F, Jackson S, Myers T, Gillespie A, Palmer C, Hawke T, Horn AM (2019) The *Burrarnys* Project: a conservationist's reach should exceed history's grasp, or what is the fossil record for? *Philosophical Transactions of the Royal Society B* 374: 20190221. <http://dx.doi.org/10.1098/rstb.2019.0221>
- Baur G (1893) Notes on the classification and taxonomy of the Testudinata. *Proceedings of the American Philosophical Society* 31: 210–225.
- Boulenger GA (1889) Catalogue of the Chelonians, Rhynchocephalians, and Crocodiles in the British Museum (Natural History). British Museum, London, 311 pp, 6 plates.
- Brinkman DB, Li JL, Ye X-K (2008) Order Testudines. In: Li, JL, Wu, XC, Zhang, FC (Eds) *The Chinese Fossil Reptiles and Their Kin*. Science Press, Beijing, 35–102.
- Bunce M, Worthy TH, Ford T, Hoppitt W, Willerslev E, Drummond A, Cooper A (2003) Extreme reversed sexual size dimorphism in the extinct New Zealand moa *Dinornis*. *Nature* 425: 172–175. <http://dx.doi.org/10.1038/nature01871>
- Cadena E, Jaramillo C, Paramo M (2008) New material of *Chelus colombiana* (Testudines; Pleurodira) from the Lower Miocene of Colombia. *Journal of Vertebrate Paleontology* 28: 1206–1212. <https://doi.org/10.1671/0272-4634-28.4.1206>
- Cann J (1997) Irwin's Turtle. *Monitor* 9: 36–40, 31–32.
- Cherepanov G (2014) Patterns of scute development in turtle shell: Symmetry and asymmetry. *Paleontological Journal* 48: 1275–1283. <http://dx.doi.org/10.1134/S0031030114120028>
- Cogger HG (2018) *Reptiles and Amphibians of Australia*. Updated 7th Edition. CSIRO Publishing, Canberra, 1060 pp.
- Davis AC, Archer M (1997) *Palorchestes azael* (Mammalia, Palorchestidae) from the late Pleistocene Terrace Site Local Fauna, Riversleigh, northwestern Queensland. *Memoirs of the Queensland Museum* 41: 315–320.
- Davis FB (1958) A note on part-whole correlation. *Journal of Educational Psychology* 49: 77–79. <http://dx.doi.org/10.1037/h0042625>
- de Vis CW (1897) The extinct freshwater turtles of Queensland. *Annals of the Queensland Museum* 3: 3–7.
- Drooger CW (1954) Remarks on the species concept in paleontology. *Micropaleontologist* 8: 23–26. <http://dx.doi.org/10.2307/1483957>
- Dzik J (1983) Relationships between Ordovician Baltic and North American Midcontinent conodont faunas. *Fossils and Strata* 15: 59–85.
- Dzik J (1990) The concept of chronospecies in ammonites. In: Pallini G, Fecca F, Cresta S, Santantonio M (Eds) *Atti del secondo convegno internazionale "Fossili, Evoluzione, Ambiente."* Pergola 25–30 ottobre 1987. Comitato Centenario Raffaele Piccinini, Pergola, 273–289.
- Ferreira GS, Rincón AD, Solórzano A, Langer MC (2016) Review of the fossil matamata turtles: earliest well-dated record and hypotheses on the origin of their present geographical distribution. *Science of Nature* 103(28): 1–12. <http://dx.doi.org/10.1007/s00114-016-1355-2>
- Futuyma DJ (2005) *Evolution*. Sinauer Associates, Sunderland, Massachusetts, 500 pp.
- Gaffney ES (1981) A review of the fossil turtles of Australia. *American Museum Novitates* 2720: 1–38.
- Gaffney ES, Tong H, Meylan PA (2006) Evolution of the side-necked turtles: The families Bothremydidae, Euraxemydidae, and Araripe-mydidae. *Bulletin of the American Museum of Natural History* 300: 1–318. [https://doi.org/10.1206/0003-0090\(2006\)300\[1:EOTSTT\]-2.0.CO;2](https://doi.org/10.1206/0003-0090(2006)300[1:EOTSTT]-2.0.CO;2)
- Georges A (1982) Ecological studies of Krefft's River Tortoise, *Emydura krefftii* (Gray), from Fraser Island, Queensland. PhD Thesis, University of Queensland, Brisbane, 195 pp.
- Georges A, Adams M (1992) A phylogeny for Australian chelid turtles based on allozyme electrophoresis. *Australian Journal of Zoology* 40: 453–476. <http://dx.doi.org/10.1071/ZO9920453>
- Georges A, Adams M (1996) Electrophoretic delineation of species boundaries within the short-necked freshwater turtles of Australia (Testudines: Chelidae). *Zoological Journal of the Linnean Society* 118: 241–260. <http://dx.doi.org/10.1111/j.1096-3642.1996.tb01266.x>
- Georges A, Birrell J, Saint KM, McCord W, Donnellan SC (1999) A phylogeny for side-necked turtles (Chelonio: Pleurodira) based on mitochondrial and nuclear gene sequence variation. *Biological Journal of the Linnean Society* 67: 213–246. <http://dx.doi.org/10.1111/j.1095-8312.1999.tb01862.x>
- Georges A, Thomson SA (2010) Diversity of Australasian freshwater turtles, with an annotated synonymy and keys to species. *Zootaxa* 37: 1–37. <http://dx.doi.org/10.11646/zootaxa.2496.1.1>
- Georges A, Wedd D, Dostine P (2021) Genetic analysis of species identity of turtles from the Roper River collected as part of the Beetaloo Basin Geological and Bioregional Assessment (GBA). Report to the Research Institute for the Environment and Livelihoods (RIEL), Charles Darwin University by Biomatrix Pty Ltd, Canberra, Australia. 10-Dec-2021. 15 pp.
- Goloboff PA, Farris JS, Nixon KC (2008) TNT, a free program for phylogenetic analysis. *Cladistics* 24: 774–786. <http://dx.doi.org/10.1111/j.1096-0031.2008.00217.x>
- Goode J (1967) *Freshwater Turtles of Australia and New Guinea* (in the Family Chelidae). Landsdowne Press, Crows Nest, Sydney, 154 pp.
- Gray JE (1863) On the species of *Chelymys* from Australia, with the description of a new species. *Annals and Magazine of Natural History* 12: 98–99, 246.



- Gray, JE (1867) Description of a new Australian tortoise (*Elseya latisternum*). *Annals and Magazine of Natural History* 20: 43–45.
- Guerrero, A, Pérez-García A (2021) Shell anomalies in the European aquatic stem turtle *Pleurosternon bullockii* (Paracryptodira, Pleurosternidae). *Diversity* 13: 1–10. <http://dx.doi.org/10.3390/d13110518>
- Guilday JE, Hamilton HW, Anderson E, Parmalee PW (1978) The Baker Bluff Cave deposit, Tennessee, and the late Pleistocene faunal gradient. *Bulletin of Carnegie Museum of Natural History* 11: 1–67. <http://dx.doi.org/10.5962/p.228590>
- Guppy JL, Jones DB, Kjeldsen SR, le Port A, Mehar S, Khatkar MS, Wade NM, Sellars MJ, Steinig EJ, Raadsma HW, Jerry DR, Zenger KR (2020) Development and validation of a RAD-Seq target-capture based genotyping assay for routine application in advanced black tiger shrimp (*Penaeus monodon*) breeding programs. *BMC Genomics* 21(541): 1–16. <http://dx.doi.org/10.1186/s12864-020-06960-w>
- Joseph-Ouni M, White A, Smales I, Sadlier R, Cann J, McCord WP, Couper P, Amey A, Freeman A (2020) The relics of Riversleigh: re-examination of the fossil record of *Elseya* (Testudines: Chelidae) with description of a new extant species from the Gulf of Carpentaria drainages, Queensland, Australia. *Batagur Monographs* 3: 7–69.
- Joseph-Ouni M, White A, Smales I, Sadlier R, Cann J, McCord WP, Couper P, Amey A, Freeman A (2022) Further evidence in support of the recognition of the freshwater turtle *Elseya oneiros* (Testudines: Chelidae) from the Nicholson and Gregory rivers of northern Queensland. *Memoirs of the Queensland Museum* 63: 93–112. <http://dx.doi.org/10.17082/j.2204-1478.63.2022.2022-01>
- Joyce WG, Bourque JR, Fernandez V, Rollet Y (2022) An alternative interpretation of small-bodied turtles from the “Middle Purbeck” of England as a new species of compsemid turtle. *Fossil Record* 25: 263–274. <http://dx.doi.org/10.3897/fr.25.85334>
- Liauw YL, Tsai CH (2022) Taxonomic revision of *Chinemys pani* (Testudines: Geoemydidae) from the Pleistocene of Taiwan and its implications of conservation paleobiology. *The Anatomical Record* 2022: 1–7. <http://dx.doi.org/10.1002/ar.25082>
- Lynn WG, Ullrich M (1950) Experimental production of shell abnormalities in turtles. *Copeia* 1950: 253–262. <http://dx.doi.org/10.23-07/1437903>
- Megirian D, Murray P (1999) Chelid turtles (Pleurodira, Chelidae) from the Miocene Camfield Beds, Northern Territory of Australia, with a description of a new genus and species. *The Beagle* 15: 75–130. <http://dx.doi.org/10.5962/p.266446>
- Meyer AB (1874) *Platemys novaeguineae* sp. nov. Dr. W. H. Peters legte vor: Eine Mittheilung von Hr. Adolf Bernhard Meyer über die von ihm auf Neu-Guinea und den Inseln Jobi, Mysore und Mafoor im Jahre 1873 gesammelten Amphibien. *Monatsberichte der Königlich Preussischen Akademie der Wissenschaften zu Berlin* 39: 128–140.
- Ouwens PA (1914) List of Dutch East Indian chelonians in the Buitenzorg Zoological Museum. *Contributions a la faune des Indes néerlandaises* 1: 29–32.
- Parham JF, Donoghue PCJ, Bell CJ, Calway TD, Head JJ, Holroyd PA, Inoue JG, Irmis RB, Joyce WG, Ksepka DT, Patane JSL, Smith ND, Tarver JE, van Tuinen M, Yang Z, Angielczyk KD, Greenwood J, Hipsley CA, Jacobs L, Makovicky PJ, Mueller J, Smith KT, Theodor JM, Warnock RCM, Benton, MJ (2012) Best practices for justifying fossil calibrations. *Systematic Biology* 61: 346–359. <http://dx.doi.org/10.1093/sysbio/syr107>
- Pritchard PCH, Trebbau P (1984) The Turtles of Venezuela. *Contributions in Herpetology* 2: 1–403.
- Seddon JM, Georges A, Baverstock PR, McCord W (1997) Phylogenetic relationships of chelid turtles (Pleurodira: Chelidae) based on mitochondrial 12S rRNA gene sequence variation. *Molecular Phylogenetics and Evolution* 7: 55–61. <http://dx.doi.org/10.1006/mpev.1996.0372>
- Thomson SA (2000) A revision of the fossil chelid turtles (Pleurodira) described by C. W. de Vis (1897). *Memoirs of the Queensland Museum* 43: 593–598.
- Thomson SA (2015) Diagnosis of living and fossil short-necked turtles of the genus *Elseya* using skeletal morphology. Master of Applied Science Thesis, University of Canberra, Canberra, 112 pp.
- Thomson SA, Amepou Y, Anamiato J, Georges A (2015) A new species and subgenus of *Elseya* (Testudines: Pleurodira: Chelidae) from New Guinea. *Zootaxa* 4006: 59–82. <https://doi.org/10.11646/zootaxa.4006.1.3>
- Thomson SA, Georges A (2009) *Myuchelys* gen. nov. – a new genus for *Elseya latisternum* and related forms of Australian freshwater turtle (Testudines: Pleurodira: Chelidae). *Zootaxa* 2053: 32–42. <http://dx.doi.org/10.11646/zootaxa.2053.1.2>
- Thomson SA, Georges A (2016) A new species of freshwater turtle of the genus *Elseya* (Testudinata: Pleurodira: Chelidae) from the Northern Territory of Australia. *Zootaxa* 4061: 18–28. <https://doi.org/10.11646/zootaxa.4061.1.2>
- Thomson SA, Mackness BS (1999) Fossil turtles from the Early Pliocene Bluff Downs Local Fauna, with a description of a new species of *Elseya*. *Transactions of the Royal Society of NSW* 123: 101–105.
- Thomson SA, White A, Georges A (1997) Re-evaluation of *Emydura lavarackorum*: Identification of a living fossil. *Memoirs of the Queensland Museum* 42: 327–336.
- Thorne A, Grün R, Mortimer G, Spooner NA, Simpson JJ, McCulloch M, Taylor L, Curnoe D (1999) Australia's oldest human remains: age of the Lake Mungo 3 skeleton. *Journal of Human Evolution* 36: 591–612. <http://dx.doi.org/10.1006/jhev.1999.0305>
- Todd EV, Blair D, Georges A, Lukoschek V, Jerry DR (2014) A biogeographical history and timeline for the evolution of Australian snapping turtles (*Elseya*: Chelidae) in Australia and New Guinea. *Journal of Biogeography* 41: 905–918. <http://dx.doi.org/10.1111/jbi.12255>
- Vitek NS (2018) Delineating modern variation from extinct morphology in the fossil record using shells of the Eastern Box Turtle (*Terrapene carolina*). *PLoS ONE* 13(3): e0193437. <http://dx.doi.org/10.1371/journal.pone.0193437>
- Vogt T (1911) *Emydura schultzei* sp. nov. Reptilien und Amphibien aus Neu Guinea. *Sitzungsberichte der Gesellschaft naturforschender Freunde zu Berlin* 9: 410–412.
- White A, Archer M (1994) *Emydura lavarackorum*, a new Pleistocene turtle (Pleurodira: Chelidae) from fluvial deposits at Riversleigh, northwestern Queensland. *Memoirs of the Queensland Museum* 27: 159–167.
- Willis PMA (1990) A Pleistocene longirostrine crocodilian from Riversleigh: first fossil occurrence of *Crocodylus johnstoni* Krefft. *Memoirs of the Queensland Museum* 28: 159–163.
- Wyneken J (2001) The anatomy of sea turtles. NOAA Technical Memorandum NMFS-SEFSC 470, National Oceanic and Atmospheric Administration, Washington, DC, 172 pp.
- Zangerl R (1969) The turtle shell. In: Gans C, Dawson WR (Eds) *Biology of the Reptilia*, Volume 1. Academic Press, New York, 311–339.
- Zhang X, Unmack PJ, Kuchling G, Wang Y, Georges A (2017) Resolution of the enigmatic phylogenetic relationship of the critical-

ly endangered Western Swamp Tortoise *Pseudemydura umbrina* (Pleurodira: Chelidae) using a complete mitochondrial genome. *Molecular Phylogenetics and Evolution* 115: 58–61. <http://dx.doi.org/10.1016/j.ympev.2017.07.019>

Zimm R, Bentley BP, Wyneken J, Moustakas-Verho JE (2017) Environmental causation of turtle scute anomalies in ovo and in silico. *Integrative and Comparative Biology* 57: 1303–1311. <http://dx.doi.org/10.1093/icb/ix0066>

## Appendix 1

### Specimens examined

**Abbreviations:** AM, Australian Museum; AMNH, American Museum of Natural History, New York; ANWC, Australian National Wildlife Collection, Canberra; NHM, Natural History Museum of London; MTD, Museum für Tierkunde, Senckenberg Dresden; ZMB, Museum für Naturkunde Berlin, MV, Museum of Victoria; NTM, Museums and Art Galleries of the Northern Territory; PNGM, Papua New Guinea National Museum; QM, Queensland Museum; RMNH, Nationaal Natuurhistorisch Museum, Leiden; UNSW, University of New South Wales, Sydney; UTGD, University of Tasmania Geology Department, Hobart; UU, University of Utah collection of J.M. Legler; WAM, Western Australian Museum; UC, University of Canberra collection of the senior author; NT, Northern Territory; WA, Western Australia; QLD, Queensland; NSW, New South Wales.

### Fossils

*Elseya (Pelocomastes) lavarackorum* (**Holotype**) Riversleigh, Queensland: registered QM F24121, lodged and registered UNSW AR 1457  
*Elseya (Pelocomastes)* sp. inc. ced. – Riversleigh, Queensland: Registered QM F30817, QM F30818, lodged and registered UNSW QMF30817, QMF30818  
*Elseya (Pelocomastes) uberrima* – Darling Downs, Qld. QMF 9040 (**Lectotype**; Gaffney 1981)  
*Elseya (Pelocomastes) nadibajagu* – Bluff Downs, Qld.: QMF30576 (**Holotype**), QMF30577

### Modern Taxa

#### Subgenus *Elseya*

*Elseya dentata* – NHM 1947.3.6.2 (**Paratype**), NHM 1947.3.6.3 (**Paratype**) – Australia. **King Edward River** – WA 28119, UU 18518 Kalumbaru (14°18' S, 126°38' E). **Ord River** – WA 47723, NTM 7057 Dunham River (16°16' S, 128°11' E); UU 14793–800 East Baines R. 7 miles S, 3 miles E, Auvergne (Bula) (15°47' S, 130°03' E). **Victoria River** – MV 10406, AM 72947–57, 75070–71, 88442, 93490, NTM 13523, MV 10384–90, 10402–05, 10827–35 Jasper Gorge (16°2' S, 130°41' E); UU 14777 Timber Creek., Timber Creek Store (15°42' S, 130°29' E); MV 10397–99, 10781, 10846, 10850, 10858–60 Timber Creek (15°39' S, 130°29' E); NHM 1947.3.6.3, 1947.3.6.2, 1947.3.4.14. upper Victoria River; NTM 13521 Victoria River (15°38' S, 131°08' E); NTM 32972 Victoria River (17°35' S, 130°05' E); WA 36998–37000 Bullo River (15°40' S, 129°40' E); AM 72692–94, 72934–46, 73346, 79160 Bullo River at crossing of Katherine – Kununurra Road (15°42' S, 129°38' E); MV 10871–74 Tortoise Reach, Fitzroy Station (15°33' S, 130°52' E). **Daly River** – NTM 32970 18 km north east of Katherine (14°23' S, 132°24' E); NTM 43, NTM 4633 Claravale Crossing, Daly River (14°22' S, 131°33' E); UU 14840–44 Daly R. 2 mile W Claravale Homestead. (14°20' S, 131°33' E). UU 14809 Daly R. (prob. Edith R. 14 mile NW Katherine) (14°20' S, 131°33' E); AM 31725 Daly River (14°28' S, 131°41' E); NTM 1220–23, 21152–54 Daly River (13°55' S, 130°56' E); NTM 17201, 17205–06, 17210, UC 0309–19, 0328

Douglas River (13°47' S, 131°17' E); UU 14810–36 Edith Falls, 19.5 miles N, 5 miles W of Katherine (14°12' S, 132°14' E); AM 31728, NTM 13317–21 Edith River (14°28' S, 132°02' E); WA 16516–17, 19906–08, 21594, 24939–40 Katherine (14°30' S, 132°13' E); NTM 3710–13, 3825, NTM 5170, 6583, 32971, AM 45481, 43533 Katherine River (14°28' S, 132°16' E); NTM 13436, 13510 Ooloo Crossing, Daly River (14°04' S, 131°15' E); UU 14837–38 Seventeen Mile Creek 11 mile N 11 mile E Katherine (14°18' S, 132°25' E); UU 14839 Ferguson River, 23 miles N, 18 miles W of Katherine (14°04' S, 131°58' E); NTM 32973 Daly River (14°41' S, 131°34' E). **Darwin Region** – NTM 7058 Casuarina (12°23' S, 130°54' E); NTM 34498 Darwin (12°27' S, 130°50' E); NTM 34497 Howard Springs (12°27' S, 131°03' E); NTM 21922 Sandy Creek, Litchfield National Park (13°16' S, 130°44' E); UU 14776 Finnis R. (35 miles S Darwin) (13°04' S, 130°58' E); NTM 21717 Tjaynara Falls, Litchfield National Park (13°15' S, 130°44' E); UU 14774, 14775 Adelaide Drainage, 60 mile S, 12 mile E Darwin (12°34' S, 131°24' E). **Alligator Rivers Region** – UU 14784–92 Barramundie Creek 3 mile S, 7 mile W Spring Peak (13°01' S, 132°23' E). CRI 2378, Australia: NT: Edith River, CRI 7738, CRI 10909, CRI 10910, CRI 12019, Australia

*Elseya flaviventralis* (voucher Label *Elseya* sp. aff. *dentata* [Sth Alligator] Georges and Adams 1992, 1996): **Mary River** – UC 0304 Corroboree Billabong, Mary River. **Alligator Rivers Region** – UU 18746–47 Barramundie Creek, 9 km S, 7 km W of Spring Peak (14°49' S, 126°30' E); UU 18740–45 Barramundie Creek, 9 km S, 7 km W, Spring Peak (13°03' S, 132°23' E); UU 18748 Barramundie Gorge, 88 km SW Jabiru (13°19' S, 132°26' E); UU 17908–40, AM 129342, UU 18755–56 Bowerbird Lagoon, 15 km S, 16 km E of Jabiru (12°47' S, 133°03' E); NTM 34496, NWC 0531, AM 43532 Deaf Adder Creek (13°04' S, 132°58' E); UU 17906–07 Double Billabong, E. Alligator River Arnhem Land (13°09' S, 133°22' E); UU 18757–59 East Alligator River Arnhem Land (13°12' S, 133°19' E); UU 18749 Graveside Pool, Jim Jim Drainage (13°16' S, 132°35' E); Jim Jim Drainage, Twin Falls (13°19' S, 132°47' E) UU 17949–53, 18750–51; AM 128001–04 Magela Creek 12°29' S, 132°52' E; NTM 13985 (**Paratype**) Pul Pul Billabong, South Alligator River (13°34' S, 132°35' E); UU 17904–05 Right Angle Pool, E. Alligator

River (12°53'S, 133°25'); UU 17942–48, 17941 Sandy Billabong 11 km S, 11 km E Nourlangie Camp (12°52'S, 132°46'); UU 18752–54 South Alligator R. 10 km SE El Sharana (13°34'S, 132°35'E); NTM 13512 (**Holotype**) South Alligator River (13°30'S, 132°28'E); AM 38325–326 Koongarra, Brockman Range, Arnhem Land (12°47'S, 132°39'E). **Mann River** – AM 40278 Mann River, Liverpool River drainage (31°28'S, 146°39'E). **Goyder River** – AM 40181 Goyder River (12°56'S, 135°01'E). CRI 4079, Australia: NT: Roper River *Elseya branderhorsti* – ANWC R08292, Merauke River, Irian Jaya, Indonesia. PNGM R25201 (**Neotype**), R25202, Bensbach River of the Trans-Fly region of Papua New Guinea (8° 50' 58.6896" S., 141° 14' 52.944" E.), CRI 3657, CRI 4074, CRI 4086, CRI 4087, CRI 4189, CRI 4599, CRI 4913, CRI 4999, Indonesia: Irian Jaya: Merauke, 11922, 13325 Papua New Guinea, 14187, no data

### Subgenus *Pelocomastes*

*Elseya albagula* – **Fitzroy-Dawson Drainage** – UU 17898–903 Connors River 3.5 km W, 3.0 km S, Connors River (22°13'S, 149°01'E); QM 48615 Belmont Creek, Fitzroy River (23°16'S, 150°28'E); QM 37933 Dawson River Crossing, at Baroondah Station (25°41'S, 149°13'E); QM, 47987, 47998, 48002, 48010 QM 48039 Dawson River, Theodore (24°57'S, 150°05'E); QM, 28449 (**Paratype**) Emerald, Nogo River, Town Weir (23°31'S, 148°01'E); UU 17096–102 Fitzroy River 63 km N, 25 km E Duaringa (23°11'S, 149°55'E); QM 38533 Rockhampton, lagoon 18 km west (23°17'S, 150°25'E); UU 17093–95, 17274 Raglan Creek 12.5 km W and 1.5 km N Mt. Larcom (23°49'S, 150°52'E); UU 17874–81, 17888–97 Raglan Creek 3.7 km E, 8.5 km S Raglan (23°48'S, 150°51'E); AM 129338–40 Raglan Creek, near Raglan (23°38'S, 150°49'E); UU 17882–87 Raglan Creek, 5.5 km W, 9.3 km S Raglan (23°48'S, 150°46'E). **Burnett River** – QM J81785 (**Holotype**), Ned Churchwood Weir, Burnett River, Qld, Australia, ANWC R6844 Walla Weir, Burnett River (25° 03' S, 152° 05' E); UU 17086–92 Barambah Creek 7.8 km S, 9.2 km E Gayndah (25°41'S, 150°48'E); UU 14872 Barambah Creek 3.2 miles E, 2.8 miles N Gayndah (25°35'S, 151°40'E); QM 48026 Burnett River, Grays Waterhole, near Gayndah (25°37'S, 151°37'E); QM 48029, 48052 Burnett River, Jones Weir (25°36'S, 151°18'E); QM 48027 Burnett River, Munduberra (25°35'S, 151°18'E); QM 48012, 48046 Burnett River, near Gayndah (25°37'S, 151°37'E); QM 2966, AM 6110, Eidsvold (25°22'S, 151°07'E); NHM 75.5.4.8, 76.5.19.77, 1875.5.4.7, 1875.5.4.8, QM, 4501, 4505 Gayndah (25°37'S 151°37'E); AM 123067 Grey's Waterhole, Burnett River (25°32'S, 151°39'E). **Mary River** – UC 0305–06 Mary River (unregistered); QM 36036, 36042, 36045 Tuan State Forest, Tinana Creek, Missings Bridge (25°41'S, 152°53'E); QM 36039, 36041, 36044, 36046–47 Coondoo Creek, Tin Can Bay Road (25°59'S, 152°50'E).

*Elseya irwini* (voucher label *Elseya* sp. aff. *dentata* [Johnstone] Georges and Adams 1992, 1996): **Cairns district** – AM 68848, 93048 Cairns district (16°55'S, 145°46'E); QM 48062, 48068 Hartley Creek (15°46'S, 145°19'E); AM 125468, QM 23053–54, 23056–57, 23060, 23175–76, 23299–300, 23322, 28954, UU 14871, 14845–70 Malanda, North Johnstone River (17°21'S, 145°35'E); QM 48060 near Cairns (16°55'S, 145°46'E); QM 48059, 48064–65 South Johnstone River (17°38'S, 145°05'E). **Burdekin River** – ANWC 0520 Townsville (19°16'S, 146°49'E); QM 59431 (**Holotype**) Burdekin River (19°42'S, 147°18'E); QM 59021 (**Paratype**) Junction of the Bowen River and Sandlewood Creek, Burdekin Drainage (20°27'S, 147°24'E). **Daintree River** – QM 93362, Douglas creek, Daintree

National Park, Queensland, Australia (–16.28547; 145.27285), QM93360, QM J93361, Daintree River, Daintree National Park, Queensland, Australia (–16.16591; 145.26842), QM J93356–7 Upper Daintree River, Queensland, (16.30601S, 145.15051E); QM J93358–9, Boolbun Creek, Daintree National Park, Queensland, (16.06833S, 145.15454E), CRI 8140, Australia: Queensland: Burdekin River basin

*Elseya lavarackorum* – **Roper River** – NTM 16328–30 Red Lilly Lagoon, Roper River (14°42'S, 134°05'E); UU 14779–82 Roper River 1.5 miles W Elsey Homestead. (14°59'S, 133°19'E); UU 14778 Roper River Elsey Homestead (14°58'S, 133°20'E). **Gregory-Nicholson Drainage** – QM 47908, 47911, 48547, 48564 Elizabeth Gorge, Bowthorn Station (18°13'S, 138°2'E); UU 14801–08 Gregory River 3.7 miles S, 3.7 miles W Gregory Downs (17°53'S, 139°17'E); QM 31939, 31942, 31944, 31946–47, 31949–50, 31952 Gregory River, Riversleigh Station, north of Mt Isa (19°02'S, 138°45'E); UC 0201, QM 48544 Lawn Hill Gorge (18°46'S, 138°25'E); QM 46284 Lawn Hill National Park (18°35'S, 138°35'E). **Roper River** – UU 14783 Waterhouse River, 1 mile S, 1 mile E Mataranka Homestead (14°55'S, 133°08'E); AM 13219 Mataranka (14°56'S, 133°04'E).

### Subgenus *Hanwarachelys*

*Elseya rhodini* – PNGM R25203 (**Paratype**), R25204 (**Holotype**), Rue Creek (tributary of Wau Creek), Gulf Province, Papua New Guinea (07°11'67.3" S, 144°37'13.8" E) MCZ134421 MCZ134422 MCZ134423 MCZ134424 MCZ134425 MCZ134426 MCZ134429 MCZ134430 MCZ134431

*Elseya schultzei* – ZMB 22182 (**Holotype**), near Sae village, Seko coast, near Skosai, ca 5 km W. mouth of Tami River, Papua, Indonesia (2°37'S, 140°54'E) ZMB22182 AMNH99613 AMNH99615 AMNH99616 MCZ153907

*Elseya novaeguineae* – MTKD 8222 (**Holotype**), Passim, Barbusi River, Papua, Indonesia, (1°41'S, 134°05'E), CRI 3133, CRI 6545–49, CRI 6586–88, CRI 6597, Indonesia: Irian Jaya, CRI 3397, captive hatched Germany, CRI 3787 no data ex Calif. Acad. Sci., CRI 4487, 7027, no data.

### *Myuchelys*

*Myuchelys latisternum* – AM 123037, 123039, Lismore Lake, Lismore, Richmond River Drainage (26°50'S, 153°16'E); UC 470, Richmond River, NSW; AM 125474–75, South Alligator River, Gimbat Station (13°34'S, 132°35'E); QM48054–55, no data; UC 2094, South Pine River, Bunya crossing (27°21'S, 152°57'E)

*Myuchelys bellii* – AM123028–29, QM 48028, 48038, billabong on Roumalla Creek, 3 km downstream from bridge at Kingston (30°30'S, 150°07'E)

*Myuchelys georgesi* – CRI 5391–92, CRI 5449–50, Bellinger River, N.S.W. UM 02016–17, Bellinger River; AM 138387–88, Bellinger River, vicinity of sawmill 1 km from Thora on the Upper Thora Road (30°25'S, 152°46'E)

*Myuchelys purvisi* – CRI 2196, no data, CRI 2391, CRI 5390, CRI 5393–94, CRI 5447, Manning River, N.S.W., Australia, QM59289–90, Barnard River; AM 123040, 123042, Barnard River Natmap 1: 250000, Hastings SH56–14 488075(31°44'S, 151°51'E)



## Supplementary Material 1

### Figures S1–S4

**Authors:** Thomson SA, Friol NR, White A, Wedd D, Georges A (2023)

**Data type:** .pdf

**Explanation notes:** Supplementary figures as referred to in the main text.

**Copyright notice:** This dataset is made available under the Open Database License (<http://opendatacommons.org/licenses/odbl/1.0>). The Open Database License (ODbL) is a license agreement intended to allow users to freely share, modify, and use this Dataset while maintaining this same freedom for others, provided that the original source and author(s) are credited.

**Link:** <https://doi.org/vz.73.e99495.suppl1>

## Supplementary Material 2

### Tables S1–S4

**Authors:** Thomson SA, Friol NR, White A, Wedd D, Georges A (2023)

**Data type:** .pdf

**Explanation notes:** Supplementary tables as referred to in the main text.

**Copyright notice:** This dataset is made available under the Open Database License (<http://opendatacommons.org/licenses/odbl/1.0>). The Open Database License (ODbL) is a license agreement intended to allow users to freely share, modify, and use this Dataset while maintaining this same freedom for others, provided that the original source and author(s) are credited.

**Link:** <https://doi.org/vz.73.e99495.suppl2>

## Supplementary Material 3

### PAUP output

**Authors:** Thomson SA, Friol NR, White A, Wedd D, Georges A (2023)

**Data type:** .pdf

**Explanation notes:** Output of the PAUP analysis, including the majority consensus and bootstrap consensus trees.

**Copyright notice:** This dataset is made available under the Open Database License (<http://opendatacommons.org/licenses/odbl/1.0>). The Open Database License (ODbL) is a license agreement intended to allow users to freely share, modify, and use this Dataset while maintaining this same freedom for others, provided that the original source and author(s) are credited.

**Link:** <https://doi.org/vz.73.e99495.suppl3>

## Supplementary material 1

### Figures S1-S4

**Authors:** Thomson S, Friol NR, White A, Wedd D, Georges A (2023)

**Data type:** pdf

**Explanation notes:** Supplementary figures as referred to in the main text.

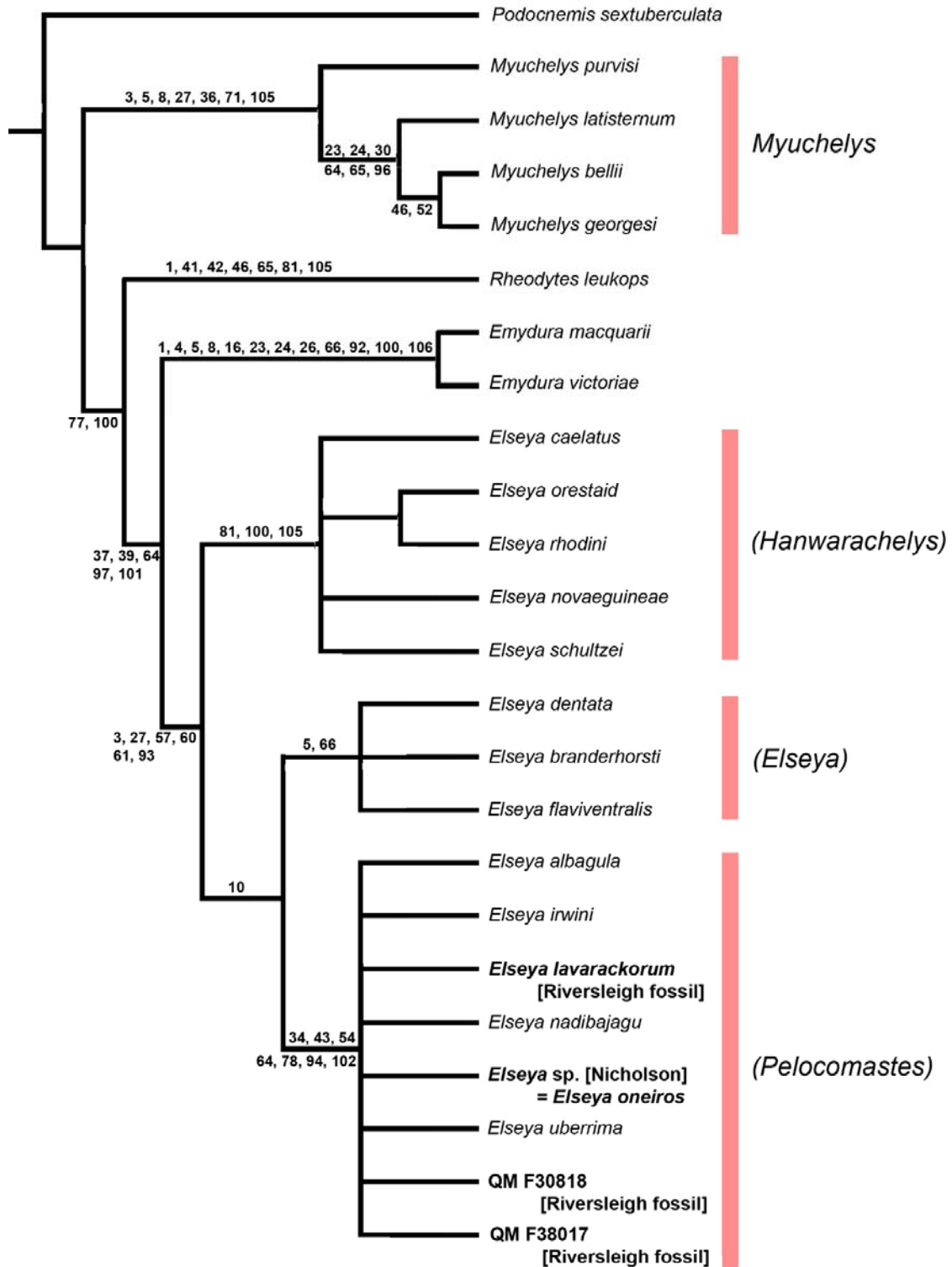
**Copyright notice:** This dataset is made available under the Open Database License (<http://opendatacommons.org/licenses/odbl/1.0>). The Open Database License (ODbL) is a license agreement intended to allow users to freely share, modify, and use this Dataset while maintaining this same freedom for others, provided that the original source and author(s) are credited.

**Figure S1.** The phylogeny of extant and fossil species of chelid turtle based on 106 morphological characters showing the shared derived characters in support of each node.

**Figure S2.** Photographs of *Elseya dentata* from the Roper River drainage, NT.

**Figure S3.** Photographs of *Elseya lavarackorum* from the Roper River drainage, NT.

**Figure S4.** Photographs of *Elseya lavarackorum* from the Nicholson-Gregory River drainage (Lawn Hill, Qld).



**Figure S1.** The phylogeny of extant and fossil species of chelid turtle based on 106 morphological characters showing the shared derived characters in support of each node. Character states were assigned to branches using TNT 1.5. Refer also to Fig. 8 in main text.





**Figure S2.** Photographs of *Elseya dentata* from the Roper River drainage, NT. Intergular scute that penetrates deeply, at least halfway, to almost separate the humerals; low blunt tubercles on the neck typically not arranged in anteroposterior rows; iris distinct; head shield robust covering much of the head including the region between the eyes; ramphotheca of upper jaw uniform in colour, without vertical streaks; no red flushing on the limbs. There are clear differences in the pattern of coloration of the temporal region between *Elseya dentata*, depicted here with cream/yellow dots on each temporal tubercle, and *Elseya lavarackorum* with a reticulated pattern in the temporal and dorsal head regions (Fig. S3); this fades with age. *Elseya dentata* typically has an ovoid carapace (e.g. Fig. 6 in main text) without the progressive development of a nuchal bay with increasing age/size.



**Figure S3.** Photographs of *Elseyia lavarackorum* from the Roper River drainage, NT. Note; an intergular scute that only moderately penetrates to separate the humerals, at most half way; low blunt tubercles on the neck, if present, arranged in anteroposterior rows; iris not distinct in life (a character not clearly evident in flash photographs); head shield typically petite not covering all of the dorsal surface of the head including the region between the eyes; ramphotheca of upper jaw with vertical streaks, variable in intensity; red flushing on the limbs (fading or absent with age). There are clear differences in the pattern of coloration of the temporal region between *Elseyia dentata* with cream/yellow dots on each temporal tubercle (Fig. S2), and *Elseyia lavarackorum* with a reticulated pattern in the temporal and dorsal head regions (depicted here); this fades with age. *Elseyia lavarackorum* has a carapace showing progressive development of a nuchal bay with increasing age/size, first departing from the classical ovoid shape, squaring off anteriorly, then developing a recessed region associated with marginals M1 and M2 (Fig. 6 in main text).





**Figure S4.** Photographs of *Elseya lavarackorum* from the Nicholson-Gregory River drainage (Lawn Hill, Qld). Intergular scute that only moderately penetrates to separate the humerals, at most half way; iris not distinct in life (a character not clearly evident in flash photographs); head shield typically petite not covering all of the dorsal surface of the head including the region between the eyes; ramphotheca of upper jaw with vertical streaks, variable in intensity; red flushing on the limbs, (faded or absent with age) (lower left); reticulation pattern in the temporal region (fades with age). Some aged individuals have extensive light blotching of the head and neck (lower right). Note that the leading and trailing spot on the iris is an uncommon variant, found occasionally in the Nicholson-Gregory populations, not yet observed in the Roper River populations. *Elseya lavarackorum* has a carapace showing progressive development of a nuchal bay with increasing age/size, first departing from the classical ovoid shape, squaring off anteriorly, then developing a recessed region associated with marginals M1 and M2 (Fig. 6 in main text). Photos: Alistair Freeman.



## Supplementary material 2

### Tables S1-S4

**Authors:** Thomson S, Friol NR, White A, Wedd D, Georges A (2023)

**Data type:** pdf

**Explanation notes:** Supplementary tables as referred to in the main text.

**Copyright notice:** This dataset is made available under the Open Database License (<http://opendatacommons.org/licenses/odbl/1.0>). The Open Database License (ODbL) is a license agreement intended to allow users to freely share, modify, and use this Dataset while maintaining this same freedom for others, provided that the original source and author(s) are credited.

**Table S1.** Matrix of character states in support of the phylogeny of Fig. 8. Characters and character states are as defined in Table S2, 1-106.

**Table S2.** Characters considered of taxonomic value for the Chelidae. Those that could be scored for *Elseya lavarackorum* = *Pelocomastes lavarackorum* (White and Archer, 1994) have an asterisk (\*). Notes are for clarification. Comments pertain to this study.

**Table S3.** Frequency of carapaces with irregular scutes in a population of *Emydura macquarii* nigra on Fraser Island. Only carapaces with irregularities involving insertions or deletions are included. Other variations in scute or sulci shape are not included. N = 670 [from Georges, 1982].

**Table S4.** Frequency of plastra with irregular scutes in a population of *Emydura macquarii* nigra on Fraser Island. Only plastra with major irregularities involving insertions or deletions are included. Other variations in scute or sulci shape are not included. N = 670 [from Georges, 1982].

**Table S1.** Matrix of character states in support of the phylogeny of Fig. 8. Characters and character states are as defined in Table S2, 1-106.

	1	2	3	4	5	6	7	8	9	10	11	12	13	14	15	16	17	18	19	20
<i>E. albagula</i>	0	1	0	0	0	1	2	0	1	2	0	3	0	0	0	0	0	1	0	0
<i>E. branderhorsti</i>	0	1	0	0	2	1	2	0	1	2	0	3	0	0	0	0	0	1	0	0
<i>E. caelatus</i>	0	1	0	0	0	1	2	0	1	?	1	3	0	0	0	0	0	1	0	0
<i>E. dentata</i>	0	1	0	0	2	1	2	0	1	2	0	3	0	0	0	0	0	1	0	0
<i>E. flaviventralis</i>	0	1	0	0	2	1	2	0	1	2	0	3	0	0	0	0	0	1	0	0
<i>E. irwini</i>	0	1	0	0	0	1	2	0	1	2	0	3	0	1	0	0	0	1	0	0
<i>E. lavarackorum</i>	?	?	?	0	0	1	2	0	1	2	0	3	0	1	0	0	0	1	0	?
<i>E. nadibajagu</i>	?	?	?	0	0	1	2	0	1	2	0	3	0	0	0	?	0	1	0	?
<i>E. novaeguineae</i>	0	1	0	0	0	1	2	0	1	2	1	3	0	0	0	0	0	0	0	0
<i>E. oneiros</i>	0	1	0	0	?	1	2	0	1	2	0	3	0	1	0	0	0	1	0	0
<i>E. orestiad</i>	0	1	0	0	0	1	2	0	1	?	1	3	0	0	0	0	0	0	0	0
<i>E. rhodini</i>	0	1	0	0	0	1	2	0	1	2	1	3	0	0	0	0	0	0	0	0
<i>E. schultzei</i>	0	1	0	0	0	1	2	0	1	2	1	3	0	0	0	0	0	0	0	0
<i>P. uberrima</i>	?	?	?	0	0	1	2	0	1	2	0	?	0	1	0	0	0	1	0	0
<i>Em. macquarii</i>	1	1	3	1	3	1	2	1	1	3	1	3	0	0	0	0	0	0	0	0
<i>Em. victoriae</i>	1	1	3	1	3	1	2	1	1	3	1	3	0	0	0	?	0	0	0	0
<i>M. purvisi</i>	0	0	0	0	1	1	0	2	0	0	1	2	0	0	0	0	0	0	0	0
<i>M. bellii</i>	0	0	0	0	1	1	0	2	1	0	1	3	0	0	0	0	0	0	0	0
<i>M. georgesi</i>	0	0	0	0	1	1	0	2	1	0	1	3	0	0	0	0	0	0	0	0
<i>M. latisternum</i>	0	0	0	0	1	1	0	2	1	0	1	3	0	0	0	0	0	1	0	0
<i>P. sextuberculata</i>	0	2	3	0	0	0	1	0	0	0	2	1	1	1	0	0	0	1	0	1
<i>R. leukops</i>	3	3	3	0	0	1	2	0	1	1	1	3	0	0	0	0	0	0	0	0
QMF30817	?	?	?	?	?	?	?	?	?	2	?	?	?	?	?	?	?	?	?	?
QMF30818	?	?	?	?	?	?	?	?	?	2	?	?	?	?	?	?	?	?	?	?

	21	22	23	24	25	26	27	28	29	30	31	32	33	34	35	36	37	38	39	40
<i>E. albagula</i>	0	1	0	0	0	0	1	0	0	0	0	1	0	1	0	0	1	0	1	1
<i>E. branderhorsti</i>	0	1	0	0	0	0	1	0	0	0	0	1	0	0	0	0	1	0	1	?
<i>E. caelatus</i>	0	1	0	0	0	0	1	0	0	0	0	1	0	0	0	0	1	0	1	?
<i>E. dentata</i>	0	1	0	0	0	0	1	0	0	0	0	1	0	0	0	0	1	0	1	?
<i>E. flaviventralis</i>	0	1	0	0	0	0	1	0	0	0	0	1	0	0	0	0	1	0	1	1
<i>E. irwini</i>	0	1	0	0	0	0	1	0	0	0	0	1	0	1	0	0	1	0	1	?
<i>E. lavarackorum</i>	?	?	?	?	0	?	?	?	0	0	0	?	?	1	0	0	1	?	1	?
<i>E. nadibajagu</i>	?	?	0	0	0	0	1	0	0	0	0	1	?	?	0	0	1	?	1	?
<i>E. novaeguineae</i>	0	1	0	0	0	0	1	1	0	0	0	1	0	0	0	0	1	0	1	?
<i>E. oneiros</i>	0	1	0	0	0	0	1	1	0	0	0	1	0	1	0	0	1	0	1	?
<i>E. orestiad</i>	0	1	0	0	0	0	1	1	0	0	0	1	0	0	0	0	1	0	1	?
<i>E. rhodini</i>	0	1	0	0	0	0	1	1	0	0	0	1	0	0	0	0	1	0	1	1
<i>E. schultzei</i>	0	1	0	0	0	0	1	1	0	0	0	1	0	0	0	0	1	0	1	?
<i>P. uberrima</i>	?	?	?	?	0	?	?	?	?	0	0	?	?	?	0	0	?	?	?	?
<i>Em. macquarii</i>	0	1	1	1	0	1	0	0	0	0	0	1	0	0	0	0	1	0	1	1
<i>Em. victoriae</i>	0	1	1	1	0	1	0	0	0	0	0	1	0	0	0	0	1	0	1	1
<i>M. purvisi</i>	0	1	0	0	0	0	1	1	0	0	0	1	0	0	0	1	0	0	0	1
<i>M. bellii</i>	0	1	1	1	0	0	1	1	0	1	0	1	0	0	0	1	0	0	0	1
<i>M. georgesi</i>	0	1	1	1	0	0	1	1	0	1	0	1	0	0	0	1	0	0	0	1
<i>M. latisternum</i>	0	1	1	1	0	0	1	1	0	1	0	1	0	0	0	1	0	1	0	1
<i>P. sextuberculata</i>	0	0	0	0	0	0	0	0	0	0	0	0	0	0	0	0	0	0	0	0
<i>R. leukops</i>	0	1	0	0	0	0	0	1	0	0	0	1	0	0	0	0	0	0	0	1
QMF30817	?	?	?	?	?	?	?	?	?	?	?	?	?	1	?	?	?	?	?	?
QMF30818	?	?	?	?	?	?	?	?	?	?	?	?	?	1	?	?	?	?	?	?





	81	82	83	84	85	86	87	88	89	90	91	92	93	94	95	96	97	98	99	100
<i>E. albagula</i>	0	0	0	0	1	1	1	1	2	0	1	1	1	1	1	1	1	0	0	2
<i>E. branderhorsti</i>	0	0	0	0	1	1	1	1	2	0	1	1	1	0	?	1	1	0	0	2
<i>E. caelatus</i>	1	0	0	0	1	1	1	1	1	0	0	1	1	0	?	0	1	0	1	1
<i>E. dentata</i>	0	0	0	0	1	1	1	1	2	0	1	1	1	?	?	1	1	0	0	2
<i>E. flaviventralis</i>	0	0	0	0	1	1	1	1	2	0	1	1	1	0	1	1	1	0	0	2
<i>E. irwini</i>	0	0	0	0	1	1	1	1	2	0	1	1	1	?	?	1	1	0	0	2
<i>E. lavarackorum</i>	?	?	?	?	?	?	?	?	?	?	?	?	?	?	?	?	?	?	?	?
<i>E. nadibajagu</i>	?	?	?	?	?	?	?	?	?	?	?	?	?	?	?	?	?	?	?	?
<i>E. novaeguineae</i>	1	0	0	0	1	1	1	1	1	0	0	1	1	?	?	0	1	0	0	1
<i>E. oneiros</i>	0	0	0	0	1	1	1	1	2	0	1	1	1	?	?	1	1	0	0	2
<i>E. orestiad</i>	1	0	0	0	1	1	1	1	1	0	0	1	1	?	?	0	1	0	1	1
<i>E. rhodini</i>	1	0	0	0	1	1	1	1	1	0	0	1	1	0	1	0	1	0	1	1
<i>E. schultzei</i>	1	0	0	0	1	1	1	1	1	0	0	1	1	?	?	0	1	0	0	1
<i>P. uberrima</i>	?	?	?	?	?	?	?	?	?	?	?	?	?	?	?	?	?	?	?	?
<i>Em. macquarii</i>	0	0	0	0	1	1	1	1	0	0	0	0	0	0	1	1	1	0	1	3
<i>Em. victoriae</i>	0	0	0	0	1	1	1	1	0	0	0	0	0	0	1	1	1	1	1	3
<i>M. purvisi</i>	0	0	0	0	1	1	1	1	0	0	1	1	0	0	1	0	0	0	1	0
<i>M. bellii</i>	0	0	0	0	1	1	1	1	0	0	1	1	0	0	0	0	1	0	0	0
<i>M. georgesi</i>	0	0	0	0	1	1	1	1	0	0	1	1	0	0	0	0	1	0	0	0
<i>M. latisternum</i>	1	0	0	0	0	1	0	1	1	0	1	1	0	0	0	0	1	0	0	0
<i>P. sextuberculata</i>	?	0	?	?	0	0	0	0	0	0	-	0	0	0	0	0	0	0	0	0
<i>R. leukops</i>	1	0	0	0	1	1	1	1	0	0	1	1	0	0	1	0	0	0	0	2
QMF30817	?	?	?	?	?	?	?	?	?	?	?	?	?	?	?	?	?	?	?	?
QMF30818	?	?	?	?	?	?	?	?	?	?	?	?	?	?	?	?	?	?	?	?

	101	102	103	104	105	106
<i>E. albagula</i>	1	1	0	0	0	0
<i>E. branderhorsti</i>	1	0	0	0	0	0
<i>E. caelatus</i>	1	0	0	0	1	0
<i>E. dentata</i>	1	0	0	0	0	0
<i>E. flaviventralis</i>	1	0	0	0	0	1
<i>E. irwini</i>	1	1	0	0	0	0
<i>E. lavarackorum</i>	?	?	?	?	?	?
<i>E. nadibajagu</i>	?	?	?	?	?	?
<i>E. novaeguineae</i>	1	0	0	0	1	0
<i>E. oneiros</i>	1	1	0	0	0	0
<i>E. orestiad</i>	1	0	0	0	1	0
<i>E. rhodini</i>	1	0	0	0	1	0
<i>E. schultzei</i>	1	0	0	0	1	0
<i>P. uberrima</i>	?	?	?	?	?	?
<i>Em. macquarii</i>	1	0	0	0	2	1
<i>Em. victoriae</i>	1	0	1	0	0	1
<i>M. purvisi</i>	1	0	0	0	2	1
<i>M. bellii</i>	0	1	0	0	2	0
<i>M. georgesi</i>	0	0	0	0	2	1
<i>M. latisternum</i>	0	1	0	1	2	?
<i>P. sextuberculata</i>	0	0	0	0	0	0
<i>R. leukops</i>	0	0	0	0	3	0
QMF30817	?	?	?	?	?	?
QMF30818	?	?	?	?	?	?

**Table S2.** Characters considered of taxonomic value for the Chelidae. Those that could be scored for *Elseya lavarackorum* = *Pelocomastes lavarackorum* (White and Archer, 1994) have an asterisk (\*). Notes are for clarification. Comments pertain to this study.

## Carapace

1. Posterior Bridge Strut Suture – Pleural Bone Association
  - 0 Restricted to Pleural Bone 5, rib/gomphosis 5 passes through the strut
  - 1 Overlaps pleural bones 5 & 6, rib/gomphosis 5 anterior to the strut
  - 2 Restricted to Pleural Bone 4
  - 3 Spans the boundary between pleural bones 4 & 5
2. Posterior Bridge Strut Suture – Peripheral Association
  - 0 Contacts Peripheral 7, barely contacts the pleural bones
  - 1 Contacts peripherals 7 & 8, barely contacts pleural bones
  - 2 Contacts peripherals 7 & 8, significantly contacts the pleural bones
  - 3 Contacts Peripheral 6, significantly contacts pleural bones
  - 4 Contacts Peripheral 8, significant contact with pleural bones
3. Posterior Bridge Strut Suture – Shape
  - 0 Triangular in generalised shape, shallow insertion into carapace, small
  - 1 Triangular in generalised shape, deeply inserted into carapace, large
  - 2 Square in generalised shape, deeply inserted into carapace
  - 3 Elongated and elliptical, deeply inserted into carapace
4. \*Anterior Bridge Strut Suture -- Relative Length
  - 0 Short, on Pleural Bone 1, length less than or equal to the shortest distance between its terminal end and the vertebrae
  - 1 Long, on Pleural Bone 1, length less than or equal to the shortest distance between its terminal end and the vertebrae
  - 2 Extremely short, barely contacts Pleural Bone 1

Notes: The anterior bridge strut suture extends inwards from the peripherals, usually Peripheral 3, along the inner surface of Pleural Bone 1.
5. \* Anterior Bridge Strut Suture -- Shape (Thomson et al. 1997)
  - 0 Anterior and posterior edges parallel
  - 1 Widest laterally narrowing towards the vertebrae
  - 2 Lateral and vertebral extremities equal in width with a medial constriction
  - 3 Forms a small triangular insertion
6. \* Neural Bones – Association of exposed Neural bones with the Nuchal (Pritchard and Trebbau 1984)
  - 0 Contact the Nuchal
  - 1 If present, do not contact the Nuchal
7. \*First Rib/Gomphosis Rotation (Thomson et al. 1997)
  - 0 Postero-ventrally rotated , falls posterior to the anterior bridge strut suture
  - 1 Not rotated, included in the anterior bridge strut suture
  - 2 Not rotated, falls posterior to the anterior bridge strut suture
8. \* Anterior Bridge Strut Suture -- Leading Edge
  - 0 Contacts posterior 3rd of Peripheral 2 at junction of peripheral 2 and Pleural Bone 1
  - 1 Contacts the middle of Peripheral 3 at junction of peripheral 3 and Pleural Bone 1
  - 2 Contacts the junction of peripherals 2 & where they join Pleural Bone 1
  - 3 Contacts the middle of Peripheral 4 at junction of Peripheral 4 and Pleural Bone 1
9. \*Suture of Rib 1 with Rib 2
  - 0 Adjacent to the contact between thoracic vertebrae 1 & 2
  - 1 Completely anterior to the contact between thoracic vertebrae 1 & 2
10. \* Anterior Bridge Strut Suture – Angle
  - 0 Approximately 160 degrees or greater
  - 1 Approximately 155 degrees

2 Approximately 140 - 150 degrees

3 Approximately 120 degrees

4 180 degrees (horizontal)

Note: This angle is defined against the line joining the junction of peripherals 3 and 4 and the junction of thoracic vertebrae 1 & 2. It is the obtuse angle. Subject to ontogenetic variation, so similar aged animals need to be compared across taxa.

11. \*Width of first Vertebral Scute (Thomson et al. 1997)

0 Significantly wider than vertebral scutes 2 & 3

1 Approximately same width as vertebral scutes 2 & 3

2 Narrower than vertebral scutes 2 & 3

12. \* Neural bones (Pritchard 1988; Thomson and Georges 1996)

0 Neurals 7-8, exposed, contiguous

1 Six (6) exposed, contiguous neurals

2 Neural 1 absent, not exposed

3 Neurals 1-2 absent, not exposed

4 All neurals absent, not exposed

13. \*Carapace -- Vertebral Keel

0 absent

1 present

14. \*Carapace -- Nuchal Bay (Gaffney et al. 2006)

0 absent

1 present

Comment: Subject to ontogenetic variation in Chelidae. First indications are in the departure of the anterior carapace from the classical ovoid shape; the anterior carapace squares off; in the oldest largest individuals, the most anterior extent of the carapace is on the forward boundary of Marginals M2.

15. \*Carapace -- Carinate

0 absent

1 present

16. \* Plastron -- Hinge

0 Plastral Hinge absent

1 Plastral Hinge present

Comment:

17. \* Rib 1 continues along Rib 2

0 Absent

1 Present

18. \*Cervical Scute

0 Present

1 Absent

19. \*Nuchal Bone -- Elongation

0 Maximum width and length approximately equal

1 Maximum length greatly exceeds maximum width

20. Thoracic Rib 11

0 Contacts Pleural Bone 8

1 Contacts Suprapygol

Note: Thoracic Rib 11 is often referred to as the second caudal rib

21. Width of pleural bones 7 & 8

0 Pleural Bones 7 & 8 approximately equal

1 Pleural Bone 8 noticeably wider than Pleural Bone 7

2 Pleural Bone 7 noticeably wider than Pleural Bone 8

22. Suprapygol -- Contacts (Thomson and Mackness 1999)

0 Contacts Pygal and Peripheral 11 (close to pygal)

1 Contacts Pygal and Peripheral 11 close to Peripheral 10

2 Contacts Pygal and peripherals 10 & 11.



23. Rib/gomphosis of Pleural Bone 6 -- Contacts
  - 0 Contacts posterior 1/4 of Peripheral 8
  - 1 Contacts middle of Peripheral 8
24. Pleural Bone 7 – Contact with Peripherals
  - 0 Contacts posterior edge of Peripheral 9
  - 1 Contacts middle of Peripheral 9
25. Cervical scute – Association with Peripherals
  - 0 Not enclosed by peripherals
  - 1 Enclosed by peripherals
26. Pelvic Ileum Carapace Suture – Shape
  - 0 Triangular
  - 1 Square
27. Proximity of Rib heads to Neural Spine
  - 0 Close with little space
  - 1 Spread wide but ribs straight
  - 2 Spread very wide and ribs curved away from pleural bones
  - 3 Spread wide with ribs 1-4 curved
28. Pygal dorsally inflected over tail
  - 0 absent
  - 1 moderately
  - 2 highly inflected
29. \* Costal Scute 1 -- Posterior Sulcus
  - 0 Contacts middle of Marginal 5
  - 1 Contacts posterior of Marginal 5
30. \* Anterio-Posterior ridge on pleural bones between rib heads
  - 0 Absent
  - 1 Present
31. \* First rib arches away from thoracic vertebrae
  - 0 Absent
  - 1 Present

Note: First rib forms a convex arch to accommodate an enlarged *longissimus dorsi* muscle
32. Musk ducts
  - 0 absent
  - 1 present
33. Plastron -- deeply concave in vicinity of humerals
  - 0 absent
  - 1 present
34. \* Intergular Scute -- notched anteriorly
  - 0 absent
  - 1 present
35. \* Pleural concavity forms a shallow trench for the length of the carapace above thoracic arches
  - 0 absent
  - 1 present
36. \* Marginals -- Relative Size of M1 and M2 (McCord and Thomson 2002)
  - 0 Marginals 1 and 2 equal in size
  - 1 Marginal 2 larger than Marginal 1
  - 2 Marginal 2 smaller than Marginal 1
37. \* Carapace -- Topography (Friol et al. 2015)
  - 0 Convex
  - 1 Highly convex
  - 2 Acuminate (tapering to a point)
  - 3 Bi-carinate (two keel-like projections)
  - 4 Pyramided

- 5 Highly pyramided
38. Posterior protuberance of the Vertebral Scutes (Friol et al. 2015)
- 0 Absent
  - 1 Present
39. \* Carapace -- Shape (Friol et al. 2015)
- 0 Not oval
  - 1 Oval
40. Lateral widening of Pleural Bone 3
- 0 Absent
  - 1 Present
41. Sulcus between Costal Scute 2 & Costal Scute 3
- 0 Contacts Peripheral 7
  - 1 Contacts Peripheral 6
42. Sulcus between Costal Scute 3 & Costal Scute 4
- 0 Contacts Peripheral 9
  - 1 Contacts Peripheral 8
43. \* Carapace -- Most anterior point (Thomson et al. 1997)
- 0 Marginal 1
  - 1 Marginal 2
44. Posterior carapace serrated in adults (Thomson et al. 2006)
- 0 Absent
  - 1 Present
45. Ilium sutural surface with carapace (Thomson and Mackness 1999)
- 0 Elongated antero-posteriorly
  - 1 Broadly triangular
46. Anterior ventral profile of the Nuchal
- 0 Concave
  - 1 Convex
47. Gomphotic bridge suture at Peripheral 4
- 0 Absent
  - 1 Present
48. Two gomphotic sutures at Peripheral 7
- 0 Present
  - 1 Absent
49. Two gomphotic sutures on posterior edge of Nuchal
- 0 Absent
  - 1 Present
50. \* Anterior bridge strut suture -- Ventral blade on posterior edge
- 0 Absent
  - 1 Present
51. \* Anterior bridge strut suture -- Ventral blade on anterior edge
- 0 Absent
  - 1 Present
52. \* Rib/gomphosis of Pleural Bone 5 rotated and striated
- 0 Present
  - 1 Absent
53. \* Sinusoidal leading edge Vertebral 2
- 0 Present
  - 1 Absent
54. \* Nuchal Bay -- formation
- 0 Absent
  - 1 Present formed from proximal inclination of 2nd peripheral
  - 2 Present formed from posterior recession of first peripheral



55. Vomer -- contacts Premaxilla

0 Absent

1 Present

## **Plastron**

56. \* Plastron -- Mesoplastra (Gaffney et al. 2006)

0 present

1 absent

57. \* Entoplastron Simple Diamond Shape (Gaffney et al. 2006)

0 present

1 absent

58. Longitudinal ridge where the Bridge forms the Plastron

0 absent

1 present

59. Plastron -- depressed between the two Ischium sutures

0 absent

1 present

60. Plastron -- Femoral region extends laterally (lobes)

0 absent

1 present

61. \* Intergular Scute -- wider than gular scutes

0 absent

1 present

62. \* Plastron: Pectoral region extends laterally (lobes)

0 absent

1 present

63. \* Pectoral Scute -- Midline length less than lateral length

0 absent

1 present

64. \* Anterior Plastral Lobe (Thomson and Georges 2016)

0 Square in general shape

1 Tapered and narrow

65. Dorsal spur on the Entoplastron

0 Absent

1 Present

## **Pelvis**

66. Pelvic Ileum -- Suture to Carapace (Thomson and Mackness 1999)

0 Contacts Suprapygol, pleurals 7 & 8

1 Contacts Suprapygol, Pleural Bone 8 and close to the suture between pleurals 7 & 8

2 Contacts Suprapygol, Pleural Bone 8 with broad separation from Pleural Bone 7

3 Contacts pleurals 7 & 8 only

67. \* Ischium -- Suture with Plastron extends to the edge of the Plastron

0 absent

1 present

68. Pubis -- elongate and narrow

0 absent

1 present

69. Pubis -- almost reaches junction of Hyoplastron and Xyphiplastron

0 absent

1 present

70. Ischium -- postero-dorsally rotated (Thomson and Mackness 1999)  
0 absent  
1 present
71. Pelvis -- latero-posteriorly rotated (Thomson and Mackness 1999)  
0 absent  
1 present

## **Skull**

72. Vomer Bone (Friol et al. 2015)  
0 absent  
1 present
73. Nasal Bone (Friol et al. 2015; Gaffney 1977)  
0 absent  
1 present
71. Quadrado-jugal Bone (Friol et al. 2015; Gaffney 1977)  
0 present  
1 absent
75. Jugal Bone -- Lateral extension of the Jugal Bone (Friol et al. 2015)  
0 absent  
1 present
76. Frontal Bone -- Process anterior to Frontal Bone (Friol et al. 2015)  
0 absent  
1 present
77. Skull: Dorso-ventral Flattening of the Skull (Friol et al. 2015)  
0 None  
1 Extreme  
2 Moderate  
3 Curvilinear  
4 Other
78. Lateral Parietal region (Friol et al. 2015)  
0 Wide anterior and reduced posterior region  
1 Rectangular  
2 Moderately concave  
3 Extremely concave  
4 Anterior region reduced
79. Vomer and Palatine are in contact (Thomson et al. 2006)  
0 absent  
1 present
80. Parietal-Squamosal connection visible in dorsal view (Friol et al. 2015)  
0 absent  
1 present
81. Squamosal Crista visible in posterior view (Friol et al. 2015)  
0 horizontal  
1 vertical
82. Convexity of the inner region of the Dentary (Friol et al. 2015)  
0 absent  
1 present
83. Median squamosal region elevated (Friol et al. 2015)  
0 absent  
1 present
84. Shape of the contact between Opisthotic and Squamosal bones in posterior view (Friol et al. 2015)  
0 straight

- 1 curvilinear
- 85. Prearticular Fossa (Friol et al. 2015)
  - 0 Short
  - 1 Long
- 86. Inner margin of Mandible lower than outer margin (Friol et al. 2015)
  - 0 Absent
  - 1 Present
- 87. Mandible divided (Gaffney 1977)
  - 0 Absent
  - 1 Present
- 88. Crista Posterior of the Squamosal
  - 0 Absent
  - 1 Present
- 89. Alveolar Ridge in mouth (Thomson et al. 2006)
  - 0 Absent
  - 1 Present on Dentary only
  - 2 Present on Dentary and Rhamphotheca
- 90. Basioccipital (Friol et al. 2015)
  - 0 Wide and shortened
  - 1 Narrow and elongated
- 91. Pterygoid -- Lateral process open (Friol et al. 2015)
  - 0 Absent
  - 1 Present
- 92. Auditory fossa -- number (Friol et al. 2015)
  - 0 Three
  - 1 Two
- 93. Opisthotic Crista – position in relation to the skull (Friol et al. 2015)
  - 0 parallel
  - 1 perpendicular
- 94. Lingual Ridge in mouth (Thomson et al. 2006)
  - 0 Absent
  - 1 Present
- 95. Parietal Arch
  - 0 Wide
  - 1 Narrow
  - 2 Absent
- 96. Rhamphotheca of upper jaw (Thomson et al. 2006)
  - 0 Thin without modification
  - 1 Thickened, enlarged, to form crushing plate
- 97. Symphyseal Hook on lower jaw (Gaffney 1977)
  - 0 Present
  - 1 Reduced or absent
- 98. Triturating surfaces of upper jaw meet at the midline (Thomson et al. 2006)
  - 0 Absent
  - 1 Present
- 99. Vomer contacts Pterygoids (Thomson et al. 2015)
  - 0 Absent
  - 1 Present

## **Head & Neck**

- 100. Head Shield (Thomson et al. 2015)
  - 0 Present with lateral extensions to tympanum wrapping around dorsal tympanum



- 1 Present with lateral extension to tympanum
- 2 Restricted to dorsal surface of head
- 3 Absent
- 101. Neck Tubercles (Thomson and Georges 2009)
  - 0 Large cornified
  - 1 Small or absent
- 102. Head shield -- deeply fenestrated (Thomson et al. 2006)
  - 0 Absent
  - 1 Present
- 103. Macrocephaly in adults
  - 0 Absent
  - 1 Present
- 104. Leading and Trailing eye-spot in iris (Thomson et al. 2006)
  - 0 Absent
  - 1 Present
- 105. Iris ring color (Thomson et al. 2015)
  - 0 Liquid (Absent)
  - 1 Green
  - 2 Gold
  - 3 White
- 106. Temporal scales cornified (Thomson and Georges 2016)
  - 0 Present
  - 1 Absent

## References

- Friol, N. R., de Barros Molina, F., el Dine Zaher, H. (2015). A new species of *Phrynops* from Southern Brazil (Testudines, Chelidae), with comments on the phylogeny of the genus. 5th Turtle Evolution Symposium 3:e986v1 (DOI - 10.7287/PEERJ.PREPRINTS.986).
- Gaffney, E. S. (1977). The side-necked turtle family Chelidae : a theory of relationships using shared derived characters. American Museum Novitates 2620:1–28.
- Gaffney, E. S., Tong, H., Meylan, P. A. (2006). Evolution of the side-necked turtles: The families Bothremydidae, Euraxemydidae, and Araripemydidae. Bulletin of the American Museum of Natural History 300:1–318.
- McCord, W. P., Thomson, S. A. (2002). A New Species of *Chelodina* (Testudines: Pleurodira: Chelidae) from Northern Australia. Journal of Herpetology 36:255–267.
- Pritchard, P. C. H. (1988). A survey of neural bone variation among recent chelonian species, with functional interpretations. Acta Zoologica Cracoviensia 31(2):11–27.
- Pritchard, P. C. H., Trebbau, P. (1984). The Turtles of Venezuela. Contributions in Herpetology 2:1–403.
- Thomson, S. A., Amepou, Y., Anamiato, J., Georges, A. (2015). A new species and subgenus of *Elseya* (Testudines: Pleurodira: Chelidae) from New Guinea. Zootaxa 4006:59–82.
- Thomson, S. A., Georges, A. (1996). Neural bones in chelid turtles. Chelonian Conservation and Biology 2:82– 86.
- Thomson, S. A., Georges, A. (2009). *Myuchelys* gen. nov. -- a new genus for *Elseya latisternum* and related forms of Australian freshwater turtle (Testudines: Pleurodira: Chelidae). Zootaxa 2053:32–42.
- Thomson, S. A., Georges, A. (2016). A new species of freshwater turtle of the genus *Elseya* (Testudinata: Pleurodira: Chelidae) from the Northern Territory of Australia. Zootaxa 4061:18–28.
- Thomson, S. A., Georges, A., Limpus, C. J. (2006). A new species of freshwater turtle in the genus *Elseya* (Testudines: Chelidae) from central coastal Queensland, Australia. Chelonian Conservation and Biology 5:74–86.
- Thomson, S. A., Mackness, B. S. (1999). Fossil turtles from the Early Pliocene Bluff Downs Local Fauna, with a description of a new species of *Elseya*. Transactions of the Royal Society of NSW 123:101–105.
- Thomson, S. A., White, A., Georges, A. (1997). Re-evaluation of *Emydura lavarackorum*: Identification of a living fossil. Memoirs of the Queensland Museum 42:327–336.

**Table S3.** Frequency of carapaces with irregular scutes in a population of *Emydura macquarii nigra* on Fraser Island. Only carapaces with irregularities involving insertions or deletions are included. Other variations in scute or sulci shape are not included. N = 670 [from Georges, 1982].

Type	Raw Frequency	Percentage Frequency
Cervical divided or partially divided	27	4.0
Cervical fused to adjacent marginal	3	0.4
Cervical deleted	4	0.6
Marginals inserted	15	2.2
Marginals deleted	8	1.2
Costal Scutes inserted	29	4.3
Costal Scutes deleted	1	0.1
Vertebrals inserted	15	2.2
Vertebrals deleted	2	0.3
<b>Total Carapace</b>	<b>89</b>	<b>13.3</b>

**Table S4.** Frequency of plastra with irregular scutes in a population of *Emydura macquarii nigra* on Fraser Island. Only plastra with major irregularities involving insertions or deletions are included. Other variations in scute or sulci shape are not included. N = 670 [from Georges, 1982].

Type	Raw Frequency	Percentage Frequency
<i>Insertions confluent with the plastron margin</i>		
Between the intergular and gular	31	4.6
Between the intergular and humeral	15	2.2
Between the humeral and pectoral	1	0.1
Between the pectoral and abdominal	1	0.1
Between the abdominal and femoral	1	0.1
Between the femoral and anal	4	0.6
<i>Other insertions</i>	20	3.0
<i>Deletions</i>	0	0.0
<b>Total plastron</b>	<b>73</b>	<b>10.9</b>

## Supplementary material 3

### PAUP output

**Authors:** Thomson S, Friol NR, White A, Wedd D, Georges A (2023)

**Data type:** pdf

**Explanation notes:** Output of the PAUP analysis, including the majority consensus and bootstrap consensus trees.

**Copyright notice:** This dataset is made available under the Open Database License (<http://opendatacommons.org/licenses/odbl/1.0>). The Open Database License (ODbL) is a license agreement intended to allow users to freely share, modify, and use this Dataset while maintaining this same freedom for others, provided that the original source and author(s) are credited.

P A U P \*

Version 4.0a (build 169) for 32-bit Microsoft Windows (built on Feb 10 2021 at 22:12:44)

Tue Feb 28 18:23:09 2023

```
-----NOTICE-----  
This is a test version that is still changing rapidly.  
Please report bugs to dave@phylosolutions.com  
-----
```

Running on Intel(R) Core(TM) i7-2600 CPU @ 3.40GHz

Current processor contains 4 CPU cores on 1 socket (hyperthreaded to 8 logical cores)

Executable built for IA-32 architecture (64-bit word length)

SSE vectorization enabled

SSSE3 instructions supported

Multithreading enabled using Pthreads

paup> set errorStop=no;

Processing of file "F:\Table\_S1.nex" begins...

Data matrix has 24 taxa, 110 characters

Valid character-state symbols: 01234

Missing data identified by '?'

Gaps identified by '-'

Case significant for alphabetic character-state symbols

Processing of input file "Table\_S1.nex" completed.



```

paup> outgroup 21;
Outgroup status changed:
  1 taxon transferred to outgroup
  Total number of taxa now in outgroup = 1
  Number of ingroup taxa = 23
paup> set maxtrees=40000 increase=no;
Maxtrees reset to 40000
paup> hsearch;

Heuristic search settings:
  Optimality criterion = parsimony
  Character-status summary:
    Of 110 total characters:
      All characters are of type 'unord'
      All characters have equal weight
      20 characters are constant (proportion = 0.181818)
      34 variable characters are parsimony-uninformative
      Number of parsimony-informative characters = 56
  Gaps are treated as "missing"
  Starting tree(s) obtained via stepwise addition
  Addition sequence: simple (reference taxon = Elseya (Pelocomastes) albagula)
  Number of trees held at each step = 1
  Branch-swapping algorithm: tree-bisection-reconnection (TBR) with reconnection
  limit = 8
  Steepest descent option not in effect
  'Maxtrees' setting = 40000 (will not be increased)
  Branches collapsed (creating polytomies) if maximum branch length is zero
  'MulTrees' option in effect
  No topological constraints in effect
  Trees are unrooted

Heuristic search completed
  Total number of rearrangements tried = 40157333
  Score of best tree(s) found = 153
  Number of trees retained = 10236
  Time used = 15.11 sec (CPU time = 15.11 sec)

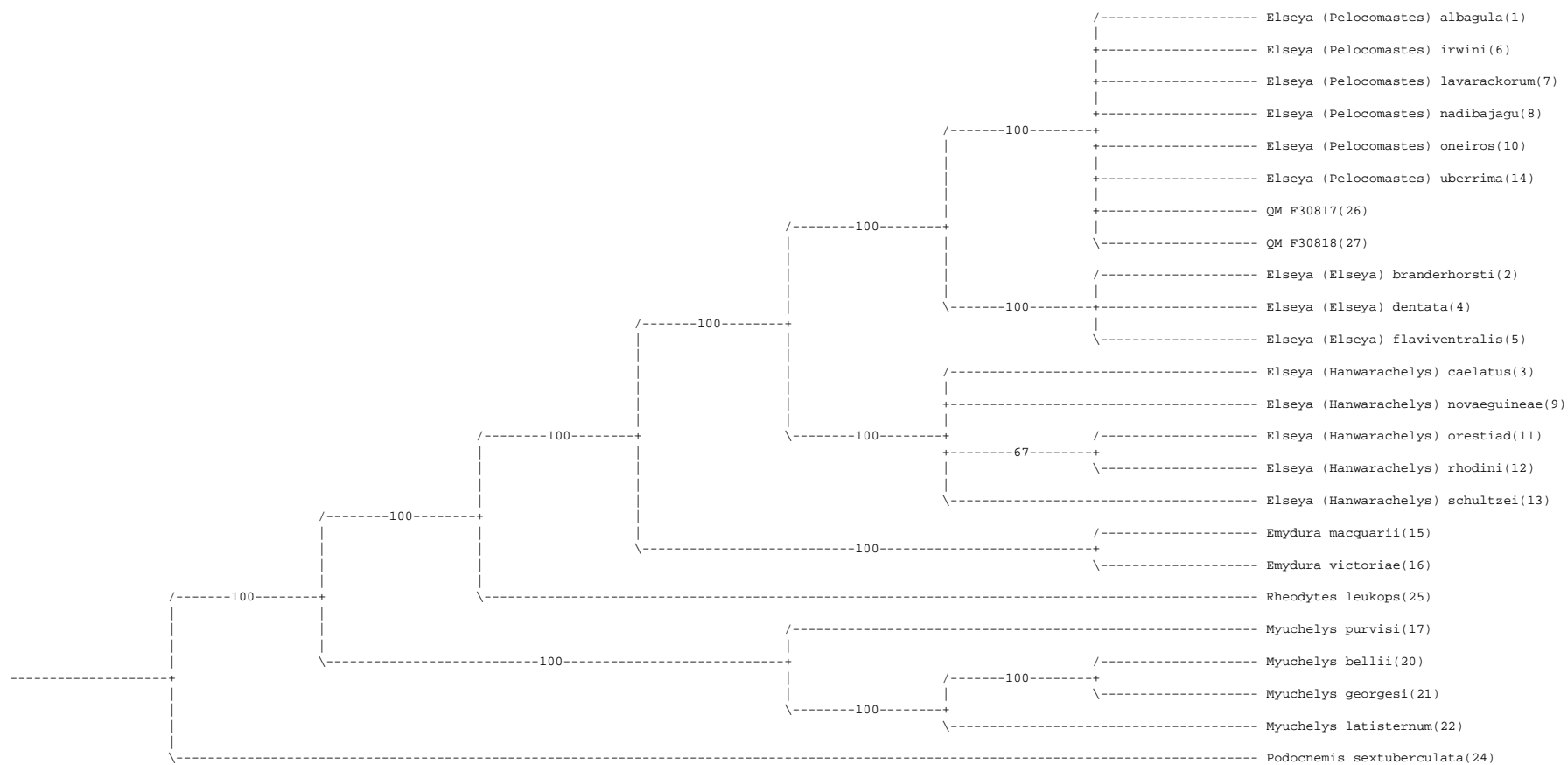
```

```
paup> rootTrees outRoot=monophyletic;
```

```
10236 trees converted from unrooted to rooted using outgroup method
```

```
paup> contree / strict=no majRule;
```

```
50% Majority-rule consensus of 10236 trees
```





Groups found in one or more trees and frequency of occurrence:

111111112222222		
123456789012345670124567	Freq	%
.....**.....	10236	100.00%
.....***.....	10236	100.00%
.....****.....	10236	100.00%
.....**.....	10236	100.00%
.*.***.....	10236	100.00%
.*.***.....	10236	100.00%
*....***.*.....**	10236	100.00%
**.....*.....**	10236	100.00%
*****.....**	10236	100.00%
*****.....**	10236	100.00%
*****.....**	10236	100.00%
*****.....**	10236	100.00%
.....**.....	6824	66.67%
.....*.....*	5118	50.00%
.....*.....*	5118	50.00%
.*.***.....	5118	50.00%
.....**.*.....**	3960	38.69%
.....**.*.....*	3168	30.95%
.....*.....*	2916	28.49%
.....**.*.....*	2688	26.26%
.....**.*.....*	2688	26.26%
.....*.....*	2532	24.74%
.....*.....*	2532	24.74%
*.....*.....*	2376	23.21%
*.....**.*.....**	2376	23.21%
.....*.....*	1560	15.24%
.....*.....*	1560	15.24%
.....*.....*	1350	13.19%
*.....***.*.....*	972	9.50%
*.....*.....*	972	9.50%
*.....***.*.....*	972	9.50%
*.....*.....*	972	9.50%
.....*.....*	972	9.50%
.....*.....*	972	9.50%
.....*.....*	828	8.09%
.....*.....*	828	8.09%
.....*.....*	828	8.09%
.....*.....*	828	8.09%
*.....*.....*	792	7.74%
*.....**.*.....*	792	7.74%
*.....*.....*	792	7.74%
*.....**.*.....*	792	7.74%
*.....*.....**	468	4.57%
*.....**.*.....*	468	4.57%
.....*.....**	468	4.57%
.....*.....**	468	4.57%
*.....***.*.....*	324	3.17%
*.....*.....**	324	3.17%
.....*.....**	324	3.17%

;

Bootstrap method with heuristic search:

Number of bootstrap replicates = 1000

Starting seed = generated automatically

Number of characters resampled in each replicate = 110

Optimality criterion = parsimony

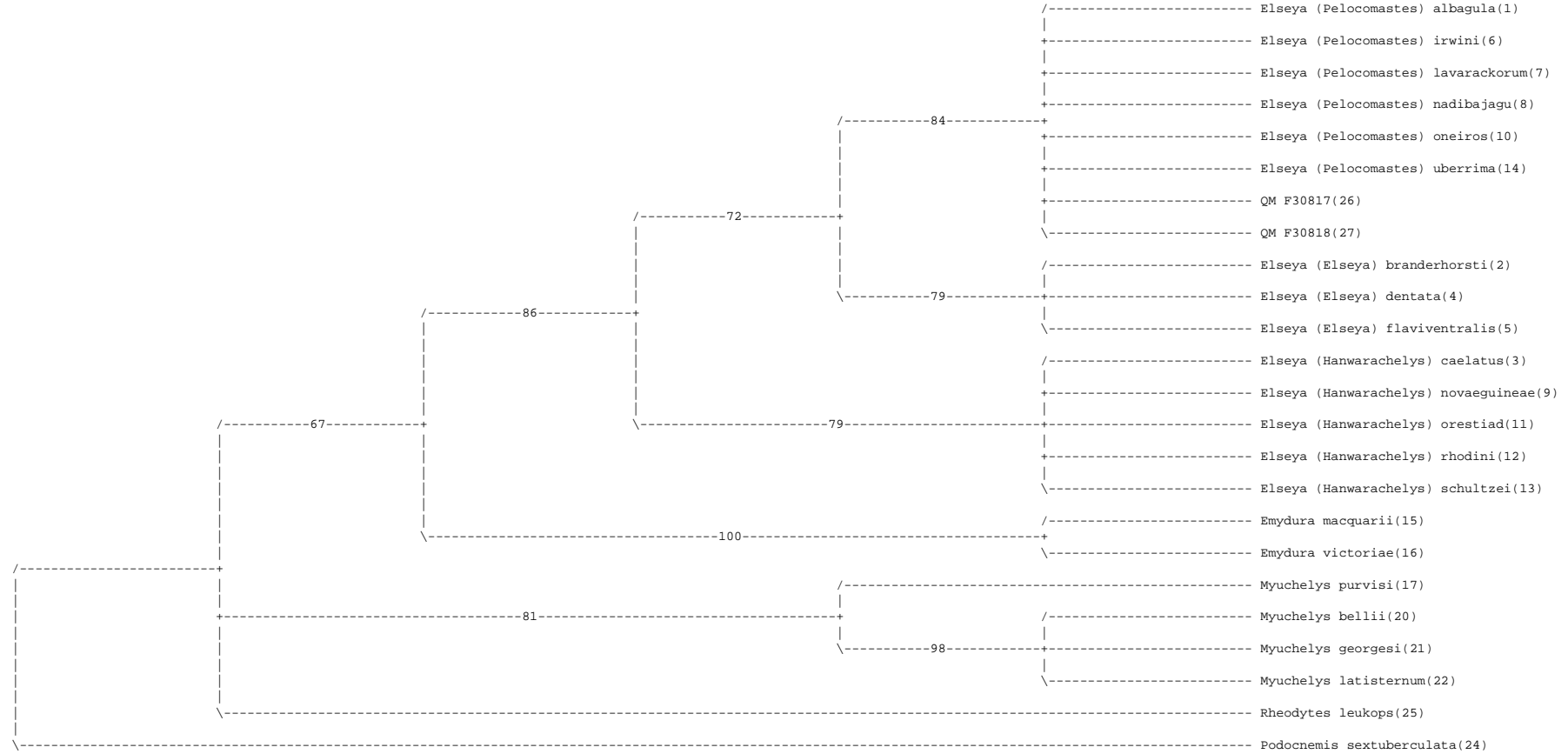
Character-status summary:

Of 110 total characters:

All characters are of type 'unord'

All characters have equal weight  
20 characters are constant (proportion = 0.181818)  
34 variable characters are parsimony-uninformative  
Number of parsimony-informative characters = 56  
Gaps are treated as "missing"  
Starting tree(s) obtained via stepwise addition  
Addition sequence: simple (reference taxon = Elseya (Pelocomastes) albagula)  
Number of trees held at each step = 1  
Branch-swapping algorithm: tree-bisection-reconnection (TBR) with reconnection limit = 8  
Steepest descent option not in effect  
'Maxtrees' setting = 40000 (will not be increased)  
Branches collapsed (creating polytomies) if maximum branch length is zero  
'MulTrees' option in effect  
No topological constraints in effect  
Trees are unrooted  
  
1000 bootstrap replicates completed  
Time used = 13:43:49 (CPU time = 13:43:22.6)

Bootstrap 50% majority-rule consensus tree



Bipartitions found in one or more trees and frequency of occurrence (bootstrap support values):

1111111122222222		
123456789012345670124567	Freq	%
.....**.....	999.45	99.95%
.....***.....	979.87	97.99%
.....*****..	861.80	86.18%
.****..*..***.*****..	837.43	83.74%
.....****.....	807.22	80.72%
*..**.....	786.98	78.70%
..*.....*..***.....	786.22	78.62%
..*.....*..***.*****..	716.63	71.66%
.....*****..	671.96	67.20%
.....*..***.....	484.82	48.48%
.....**.....	476.81	47.68%
.....**.....	412.35	41.23%
.....*****..	361.02	36.10%
..*.....**.....	333.47	33.35%
.....**..*.....*	317.02	31.70%
.....*****.*..	305.08	30.51%
.....**.....	299.17	29.92%
.....*.....*	244.54	24.45%
.....*..*.....	214.48	21.45%
.****..**..***.*****..	197.40	19.74%
.....**..*.....**	171.26	17.13%
.*****.*****.*****..	160.96	16.10%
.....**..*.....*	152.52	15.25%
.....**..*.....*	152.45	15.25%
.....**.....	139.68	13.97%
.....**.....**..	133.64	13.36%
.....*..*.....*	131.28	13.13%
.....*.....*	129.67	12.97%
.....*.....*	129.16	12.92%
.****..*..***.*****..	128.17	12.82%
.****..*..***.*****.*	124.96	12.50%
.....*****.*..	124.83	12.48%
.....*..***.*****..	122.02	12.20%
.....*.....*	116.37	11.64%
.*****.*****.*****..	91.31	9.13%
.*****.*****.*****.*	90.93	9.09%
.****..*..***.*****..	81.61	8.16%
.****..**..***.*****..	75.01	7.50%
.....*****..	74.49	7.45%
.****..**..***.*****.*	74.23	7.42%
.****..**..***.*****..	70.75	7.08%
.****..*..***.....	62.62	6.26%
.....*..*.....*	62.13	6.21%
.....*..*.....*	62.09	6.21%
.....*.....*..**..	59.26	5.93%
.....*.....*	57.90	5.79%
.....*.....*	57.02	5.70%
.*****.*****.*****..	55.81	5.58%
.*****.*****.*****.*	55.27	5.53%
.....*..*.....**	51.63	5.16%
.....**.....*	50.52	5.05%
..*.....*..***.*****..	50.41	5.04%

912 groups at (relative) frequency less than 5% not shown